

**Effectiveness of sprinklers in
residential premises**

Section 5: Experimental
Programme (Appendix 5H)

Project report number 204505

Dr Corinne Williams
and Dr Stuart Campbell

February 2004

Appendix 5H – Summary graphs of temperature at head height, FED of asphyxiating gases and convective heat against time in each location for the compartment fires for the equivalent sprinklered and unsprinklered conditions

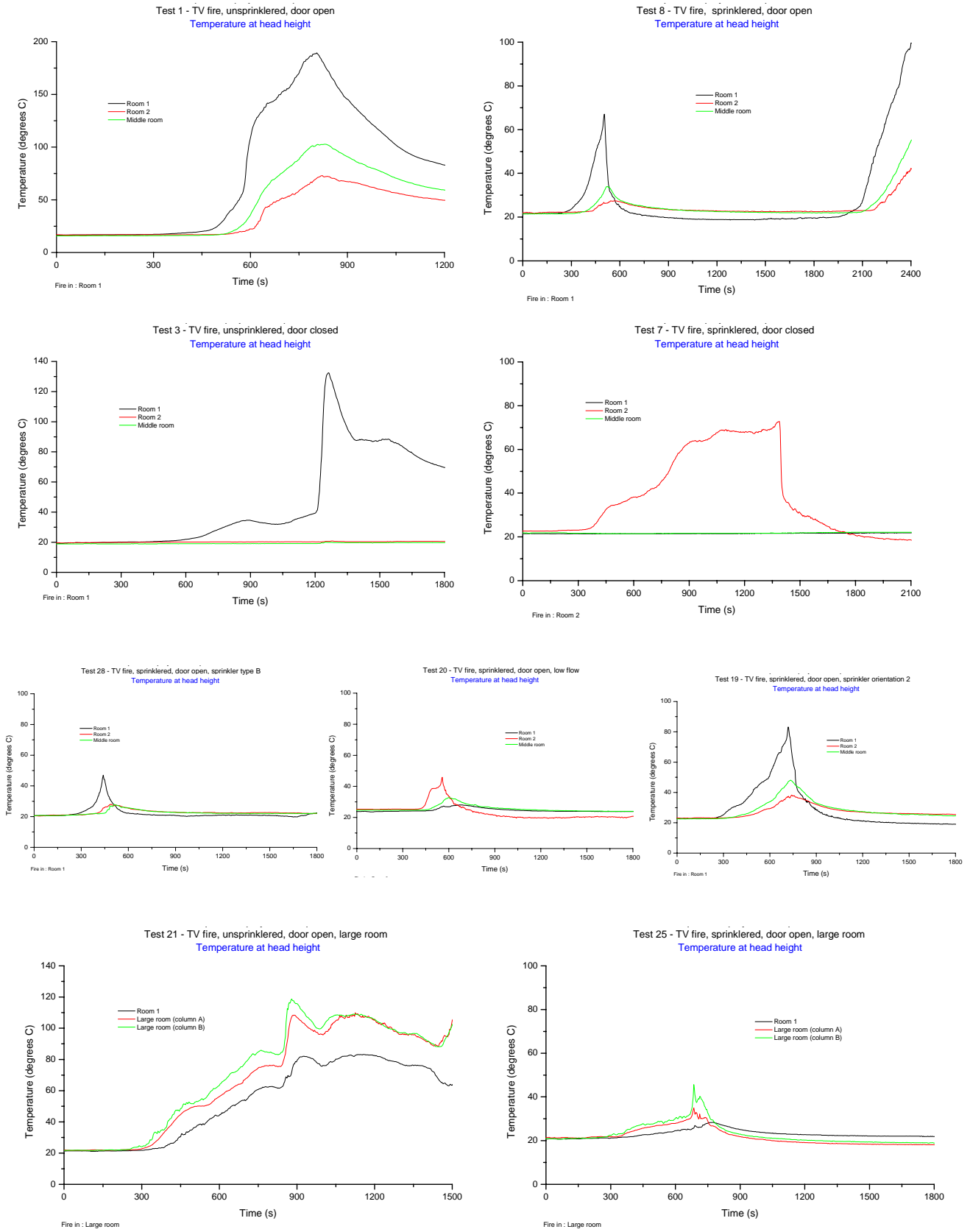


Figure 5H.1 – TV fires, temperatures at head height in each room

3 Section 5: Experimental Programme Appendix 5H

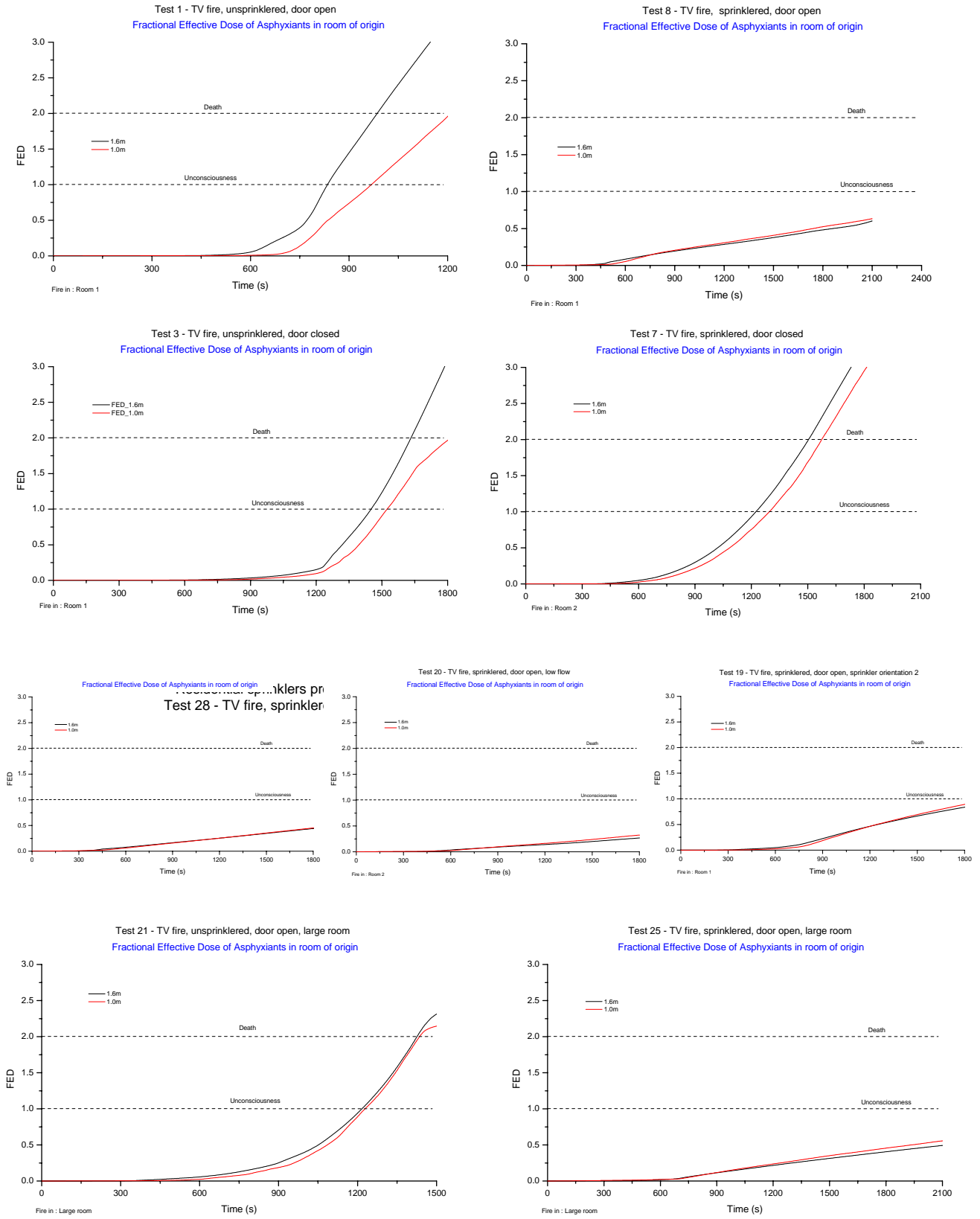


Figure 5H.2 – TV fires, FED due to asphyxiants gases in room of origin

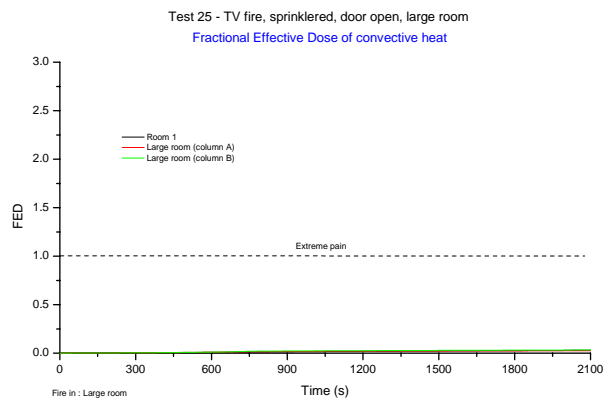
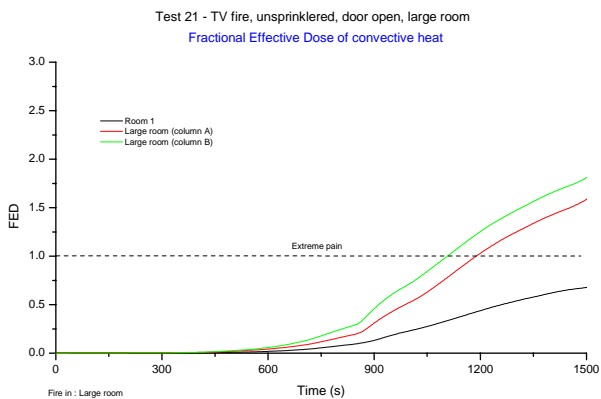
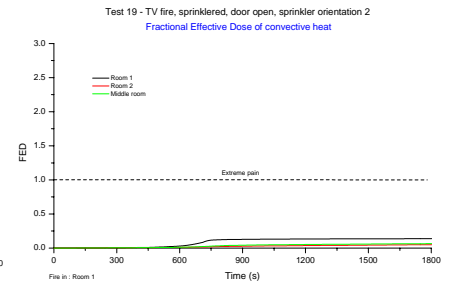
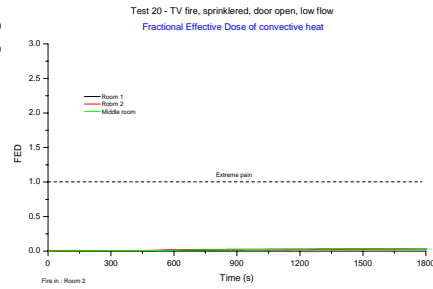
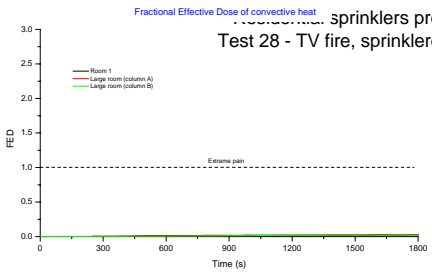
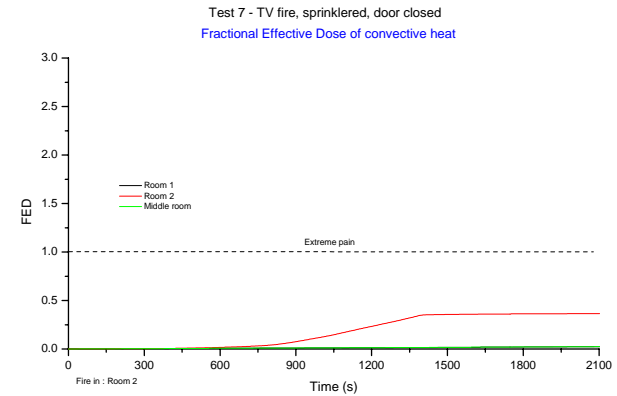
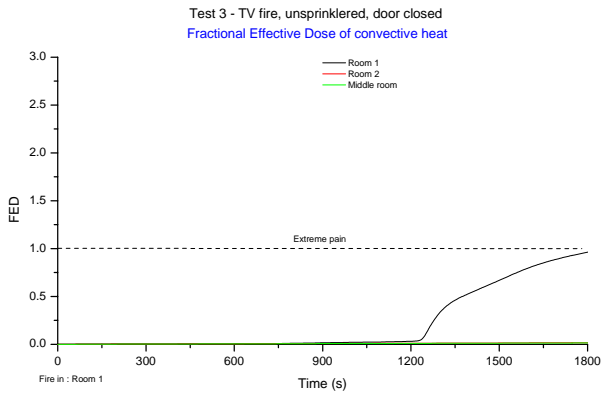
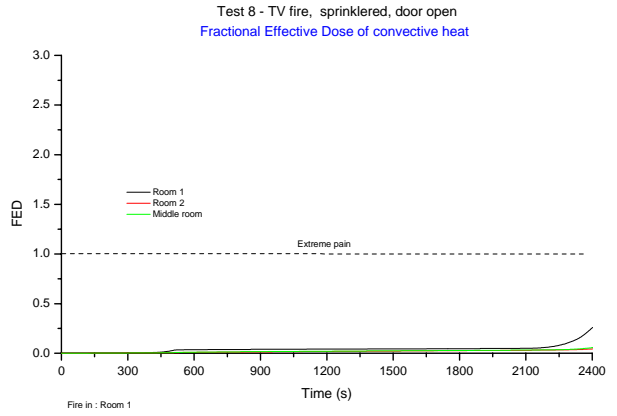
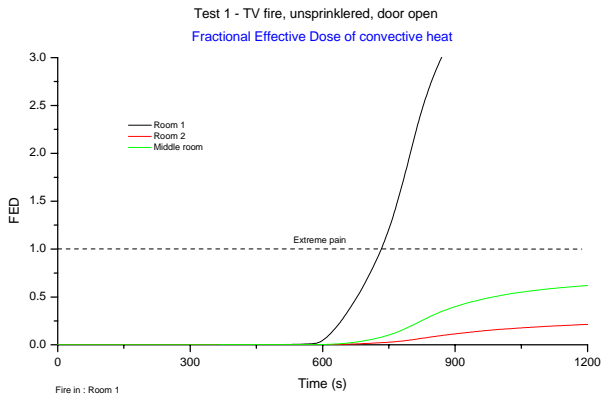


Figure 5H.3 – TV fires, FED due to convective heat in each room

5 Section 5: Experimental Programme Appendix 5H

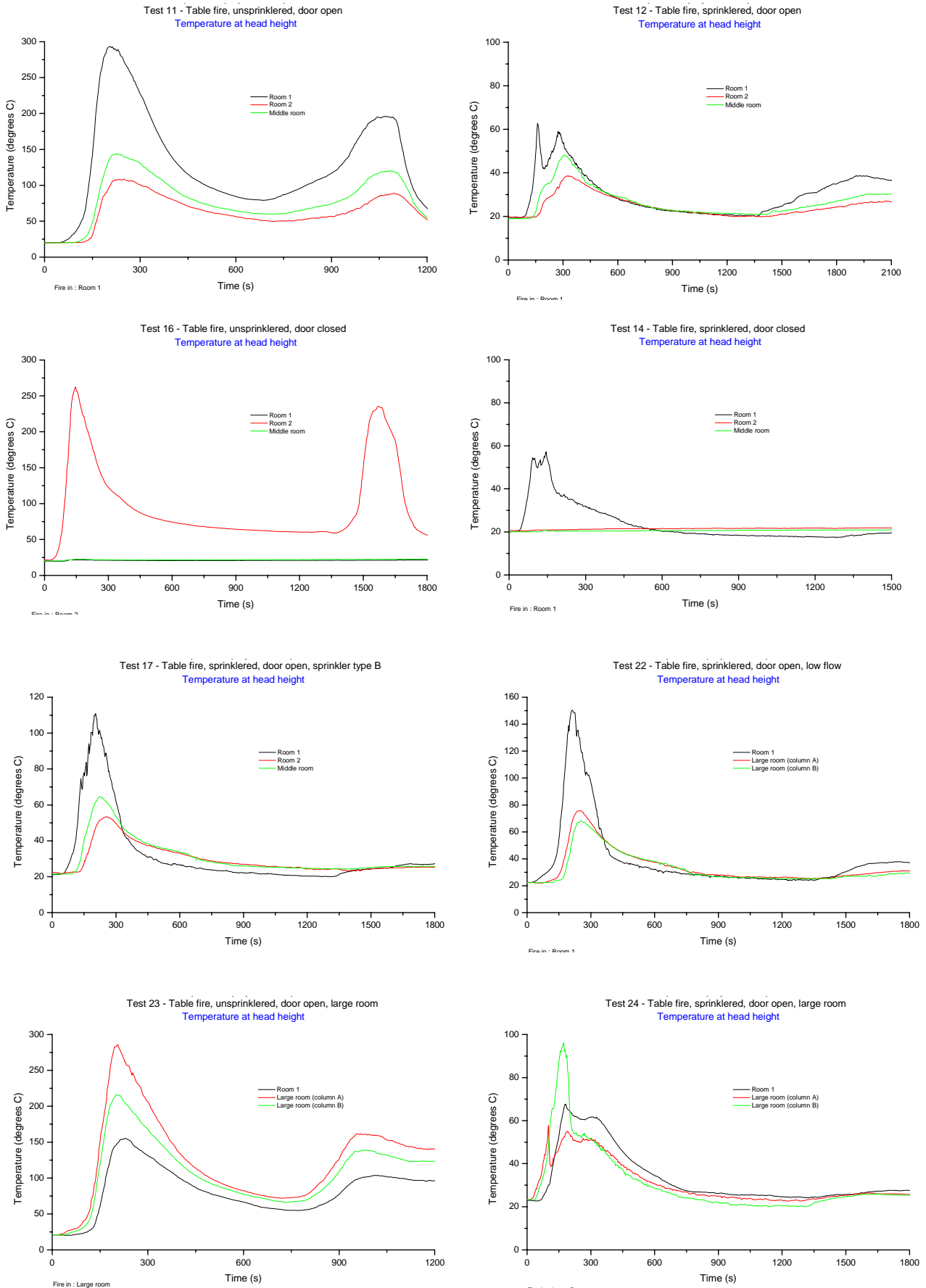


Figure 5H.4 – Table fires, temperatures at head height in each room

6 Section 5: Experimental Programme Appendix 5H

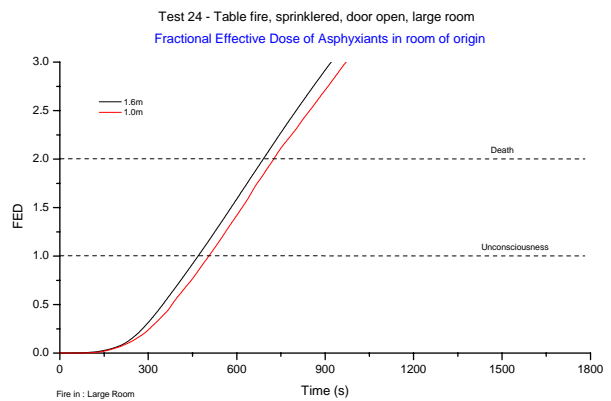
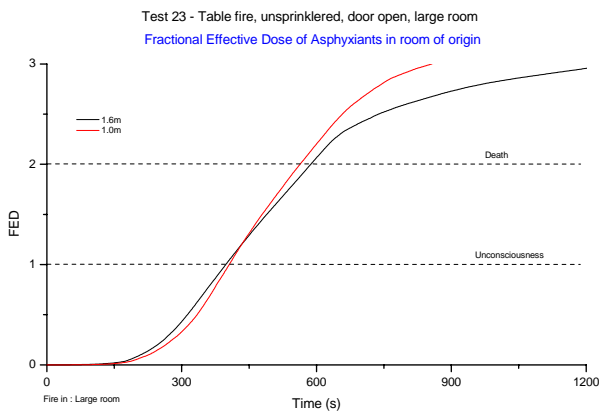
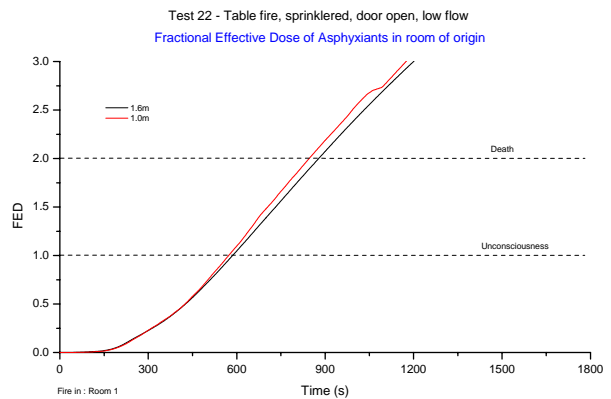
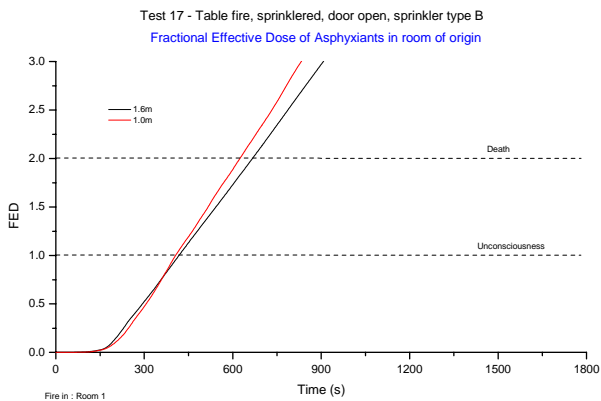
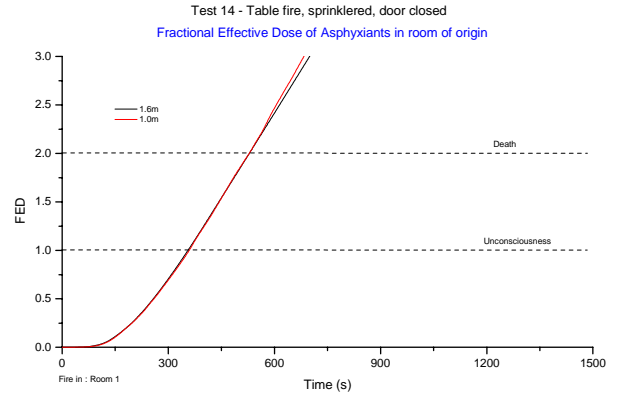
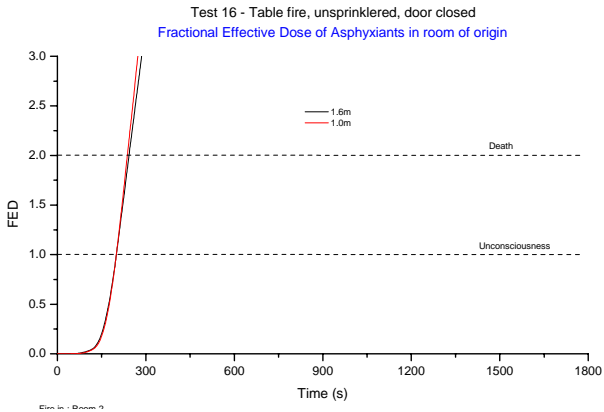
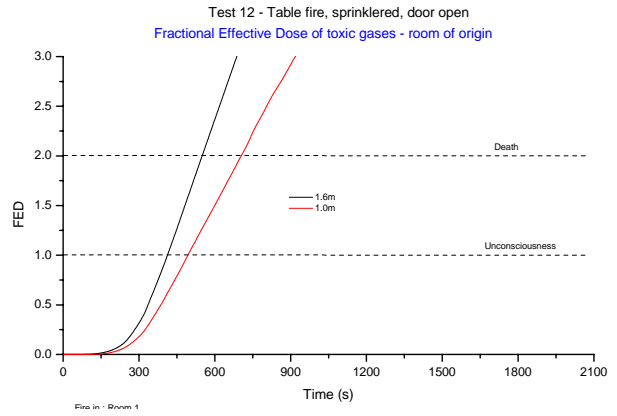
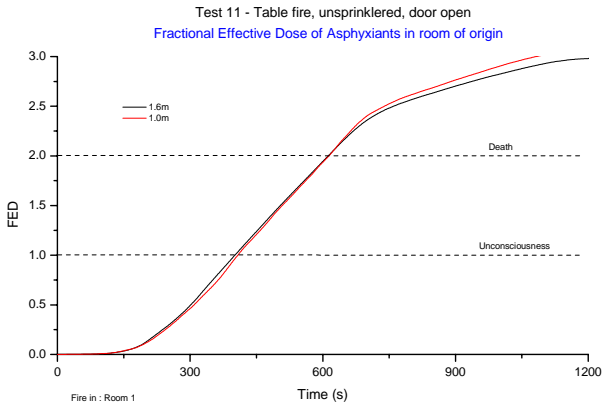


Figure 5H.5 – Table fires, FED due to asphyxiant gases in room of origin

7 Section 5: Experimental Programme Appendix 5H

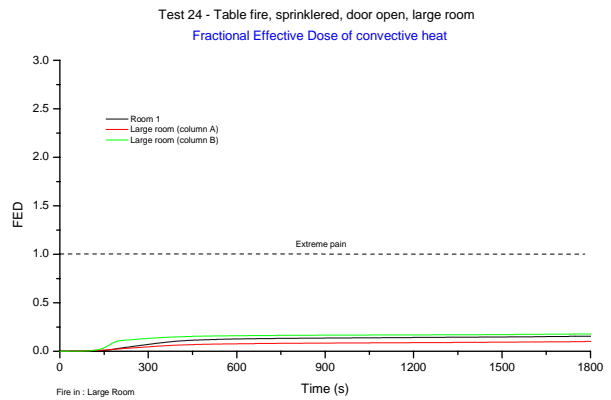
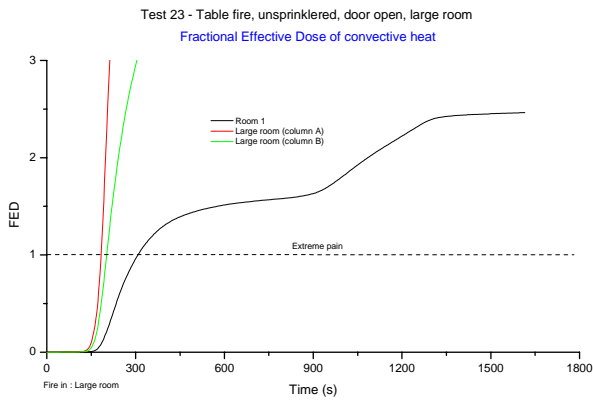
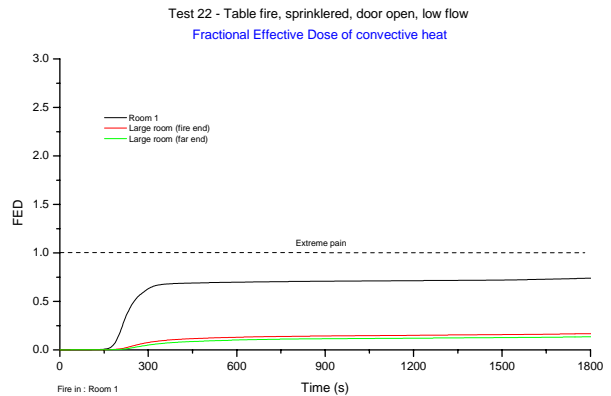
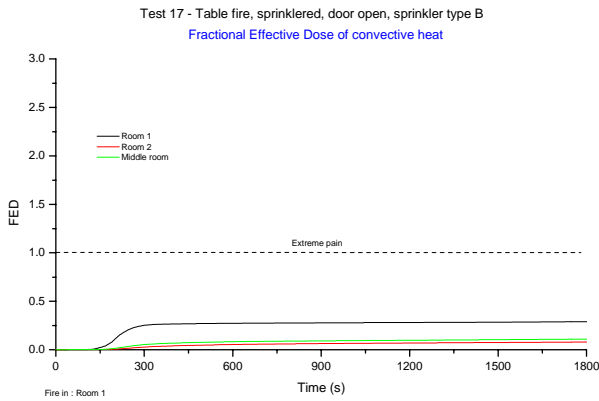
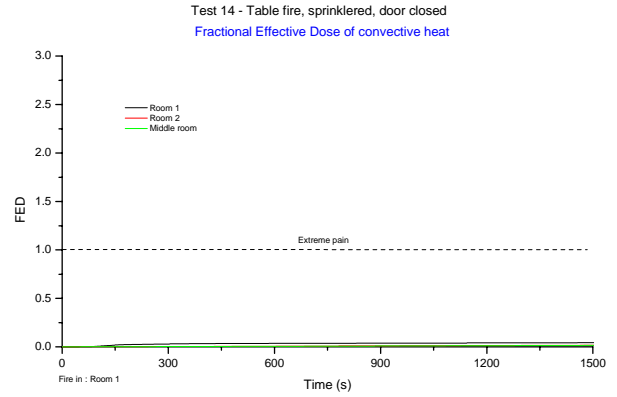
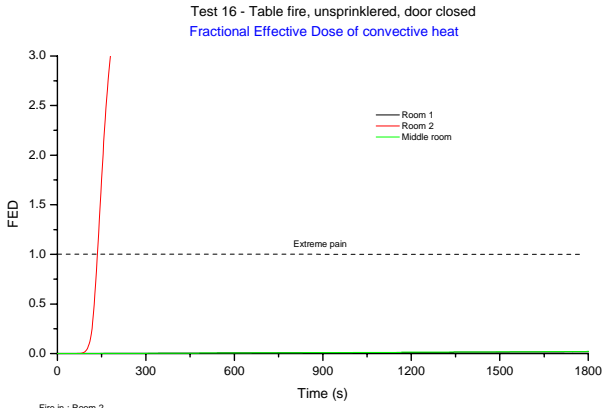
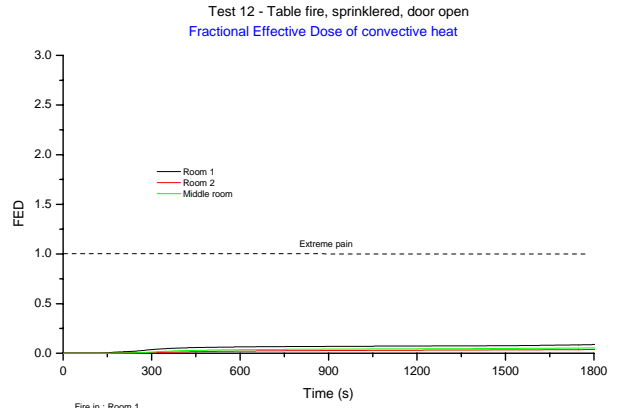
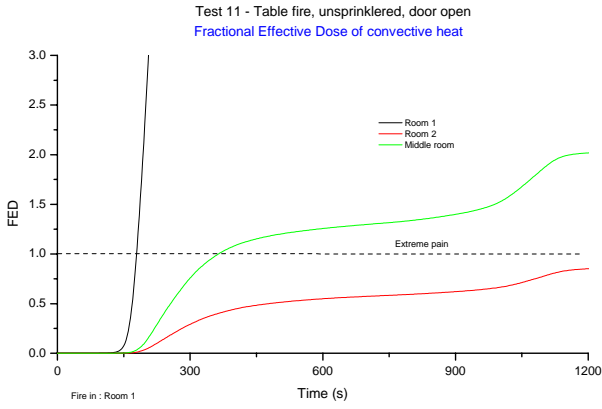


Figure 5H.6 – Table fires, FED due to convective heat in each room

8 Section 5: Experimental Programme Appendix 5H

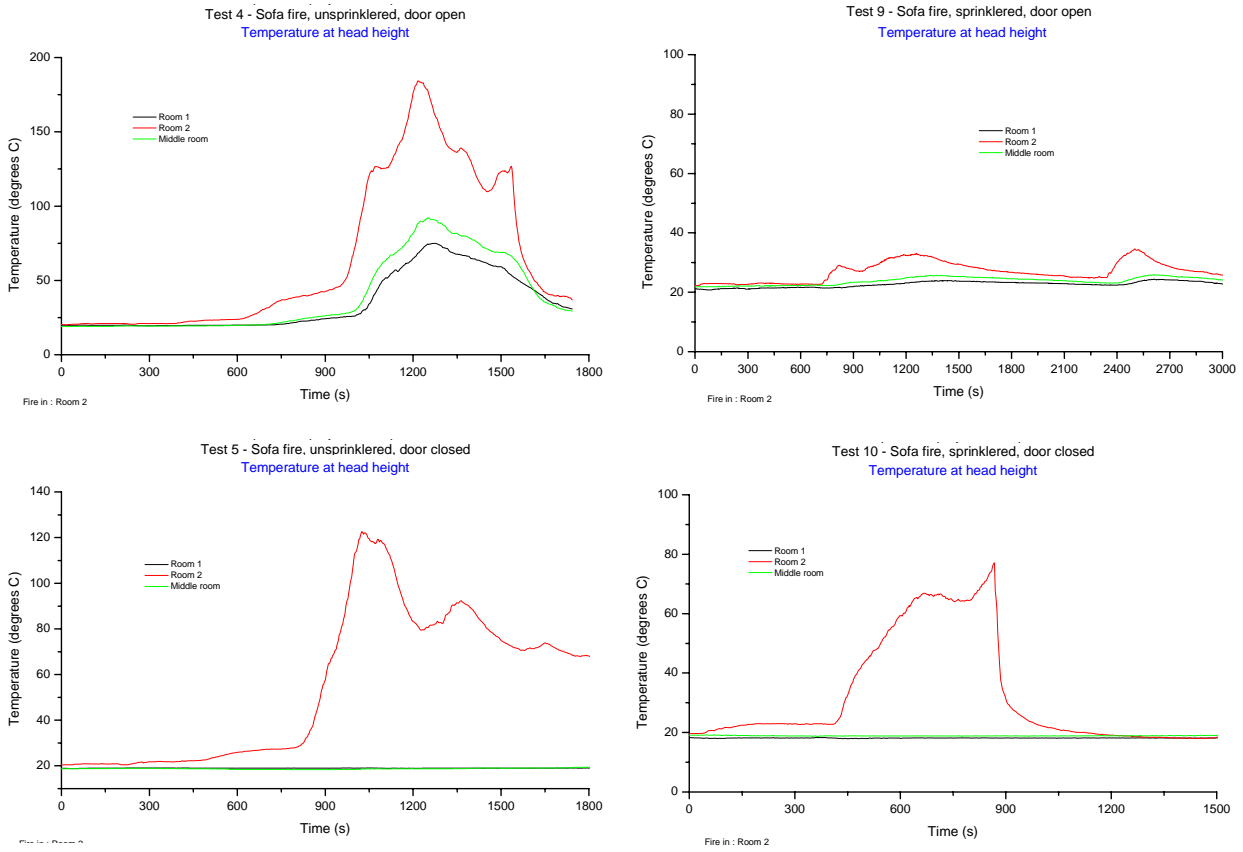


Figure 5H.7 – Sofa fires, temperatures at head height in each room

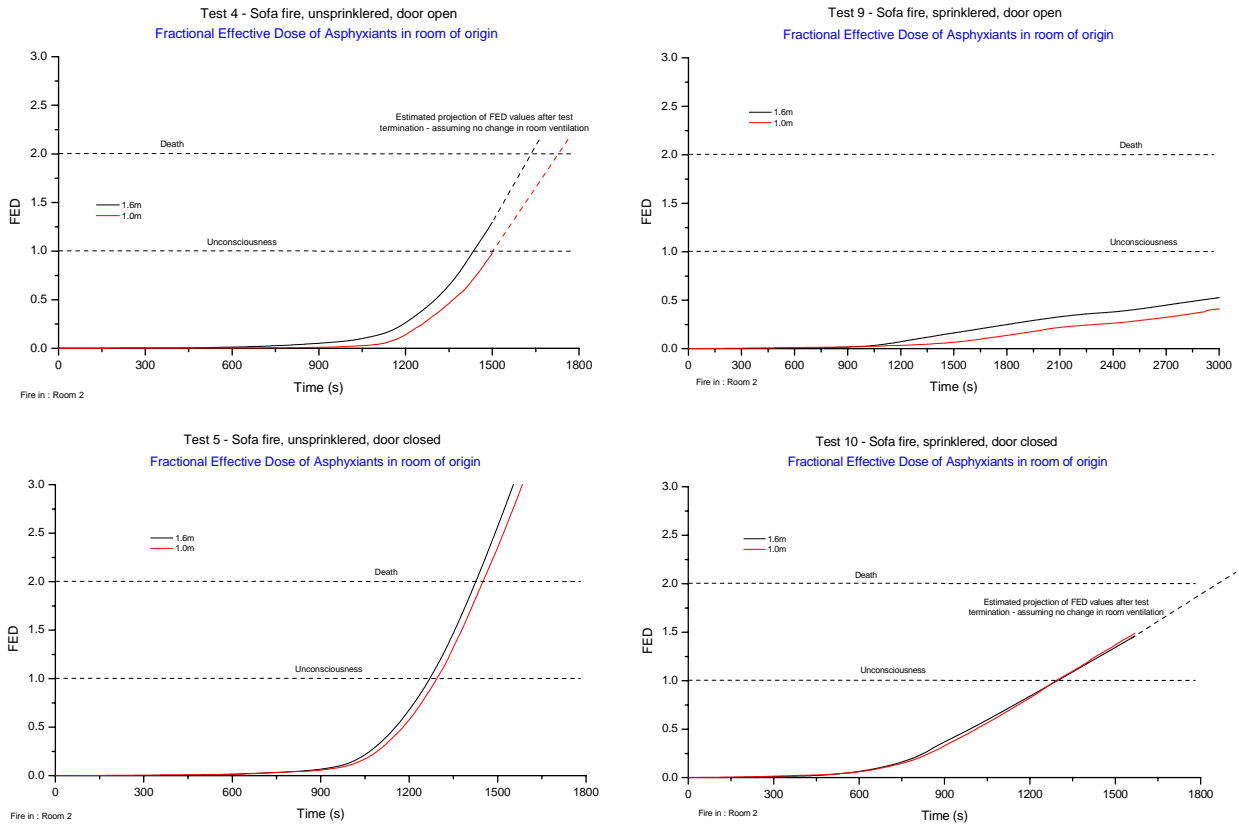


Figure 5H.8 – Sofa fires, FED due to asphyxiant gases in room of origin

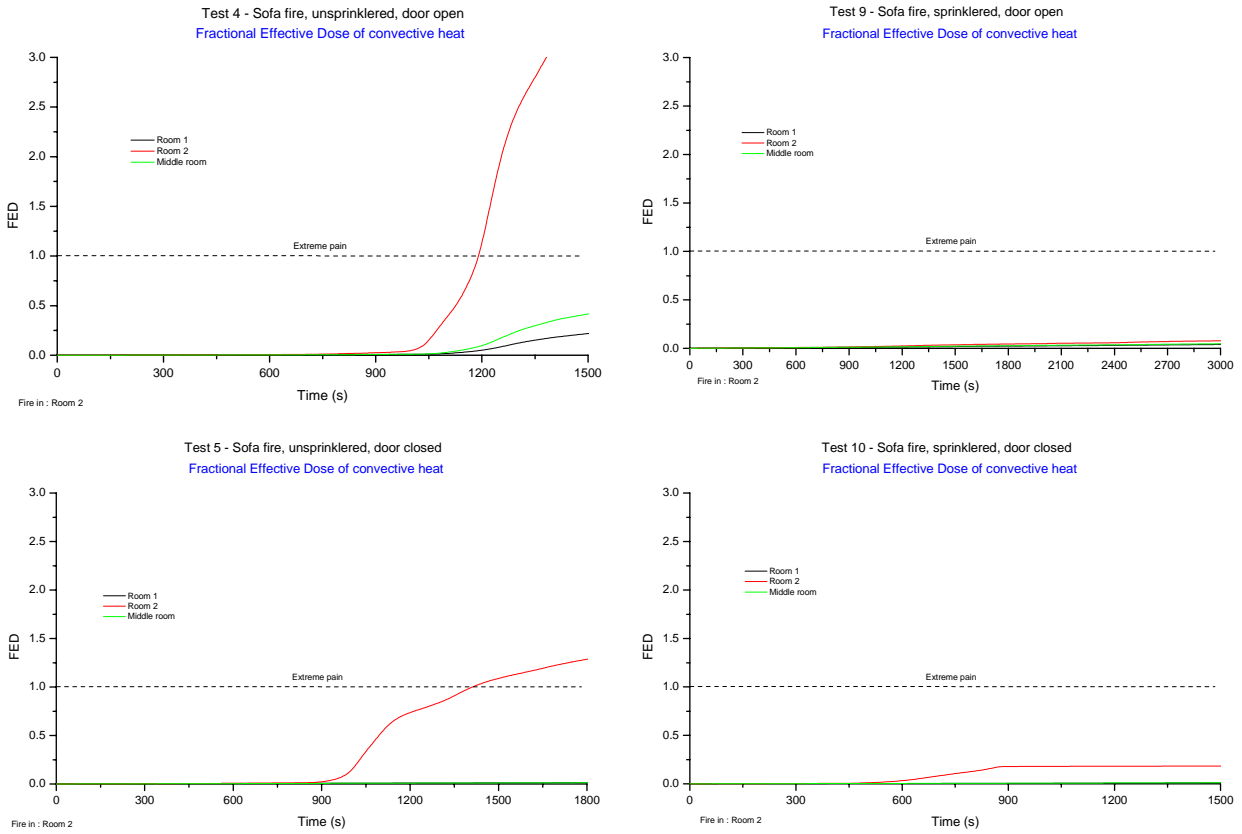


Figure 5H.9 – Sofa fires, FED due to convective heat in each room

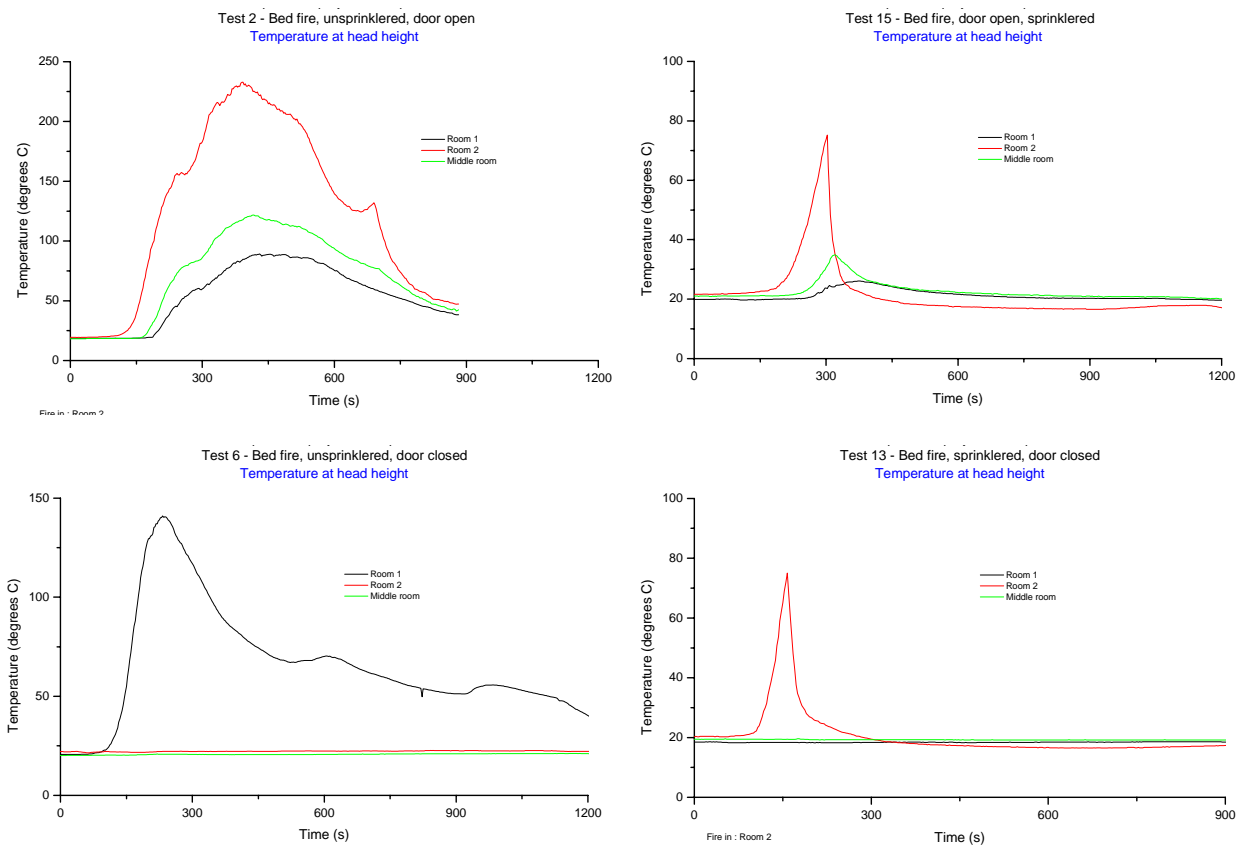


Figure 5H.10 – Bed fires, temperatures at head height in each room

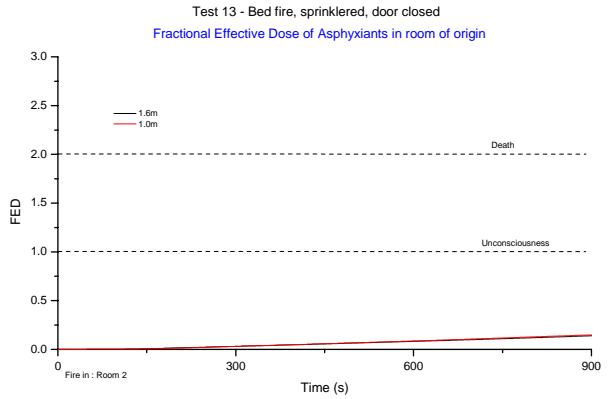
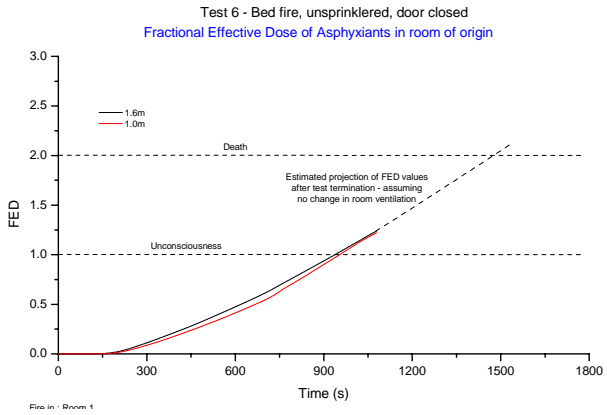
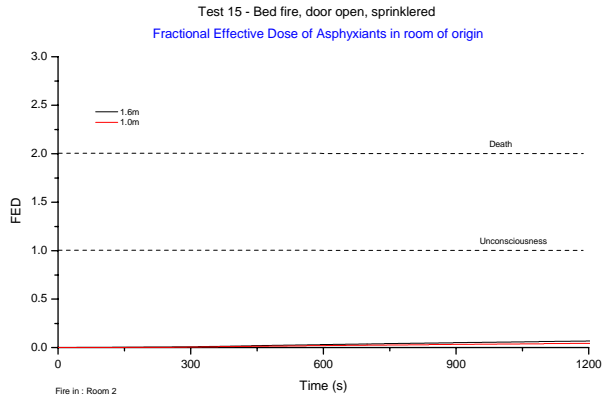
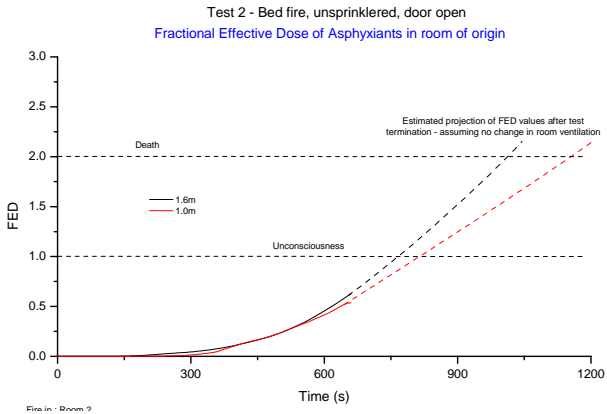


Figure 5H.11 – Bed fires, FED due to asphyxiant gases in room of origin

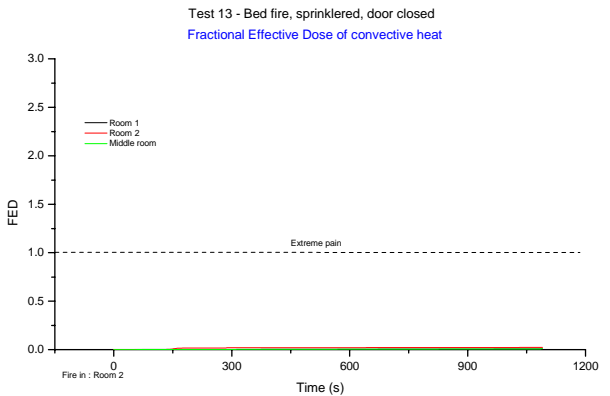
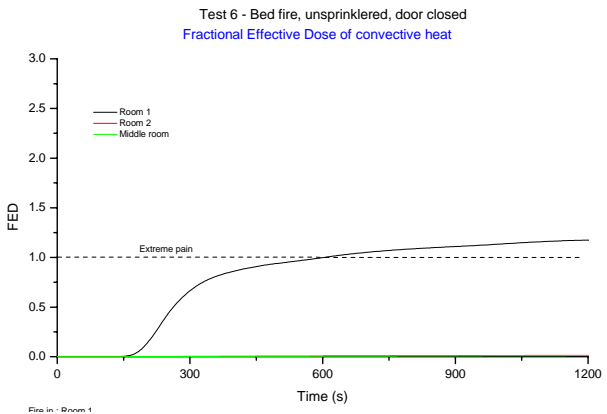
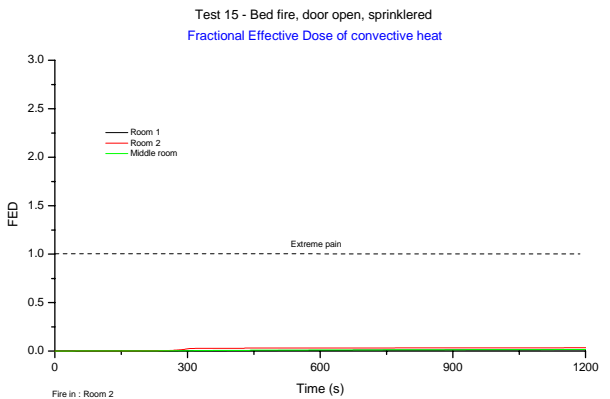
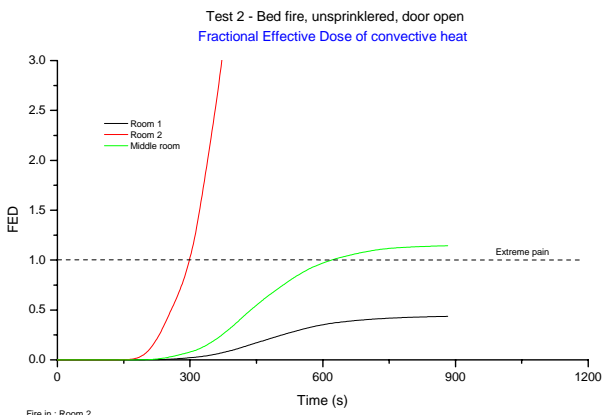


Figure 5H.12 – Bed fires, FED due to convective heat in each room

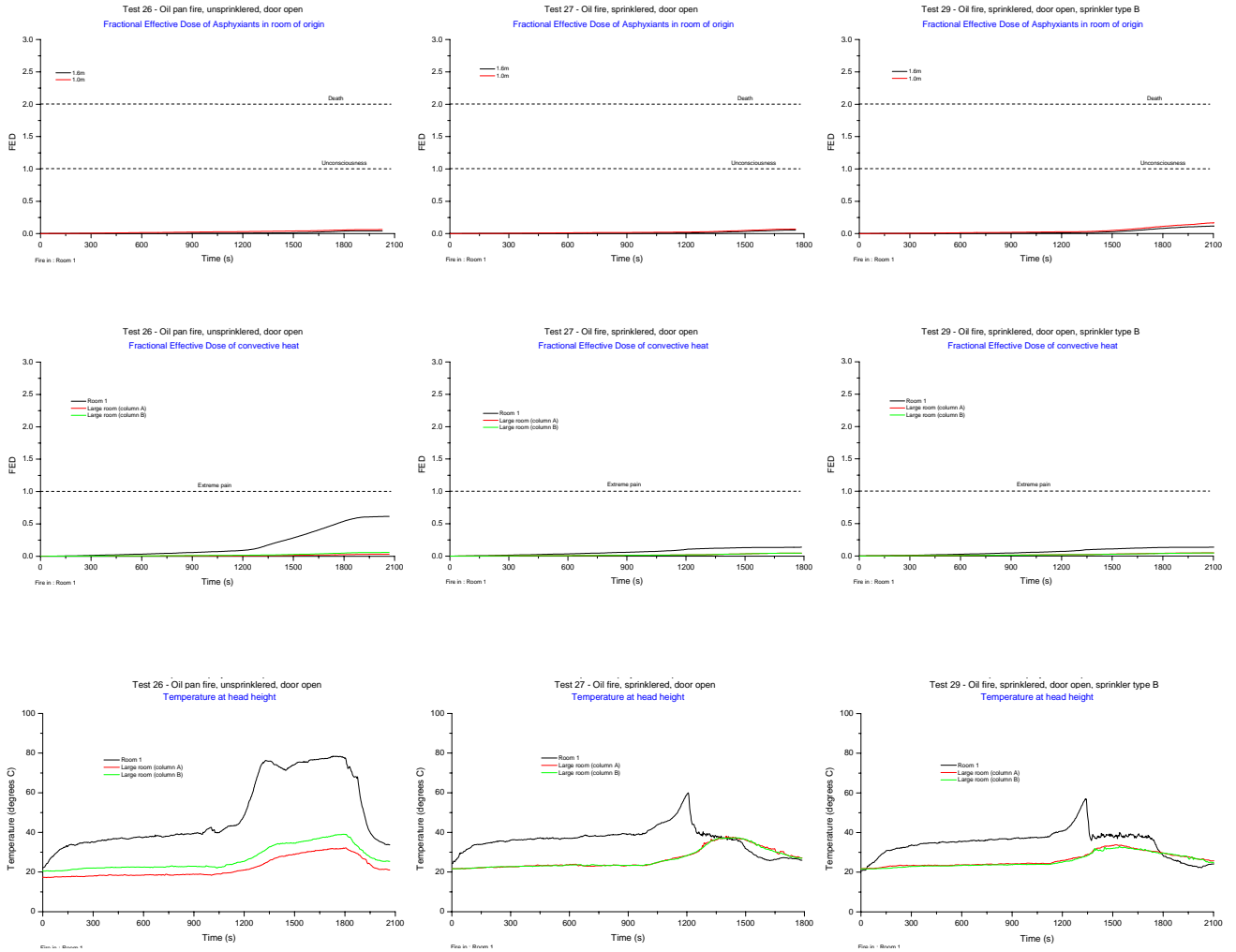


Figure 5H.13 - Oil pan fires, FED due to asphyxiant gases and convective heat, and temperatures at head height

