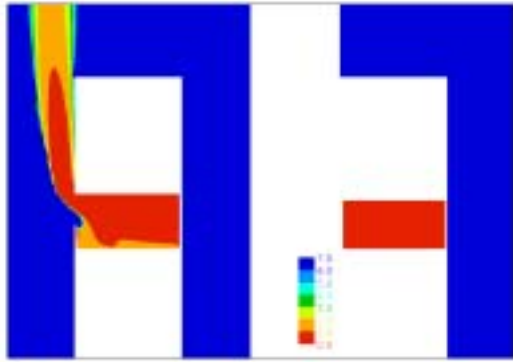


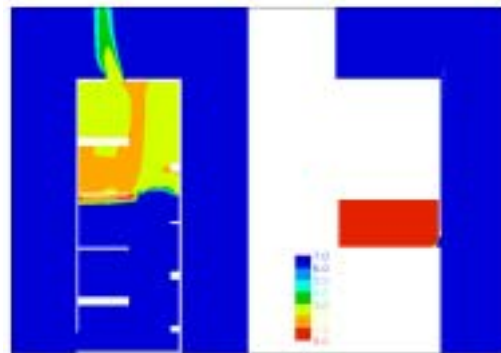


Smoke Ventilation of Common Access Areas
of Flats and Maisonettes
Appendix Ev – Selected 'visibility distance'
contours for CFD 'corridor & tall-lobby'
scenarios; 0.25 MW fire and 0.1 m dwelling,
lobby & stair door gaps

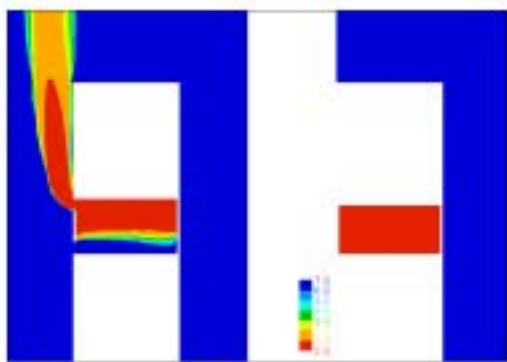
The authors of this report are employed by BRE. The work reported herein was carried out under a Contract placed by the ODPM. Any views expressed are not necessarily those of the ODPM.



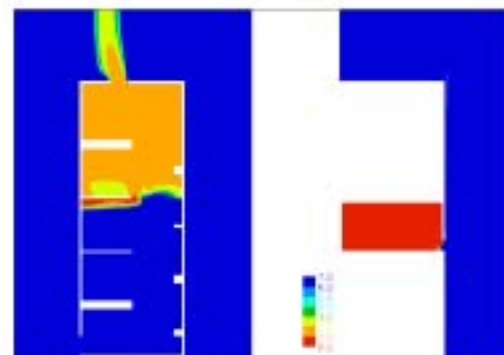
Lobby: L: 1.5m high-level wall vent
(1m wide x 1.5m high)
R: No vent
Mean temp in occupied space = 22°C



Stair: Top and bottom

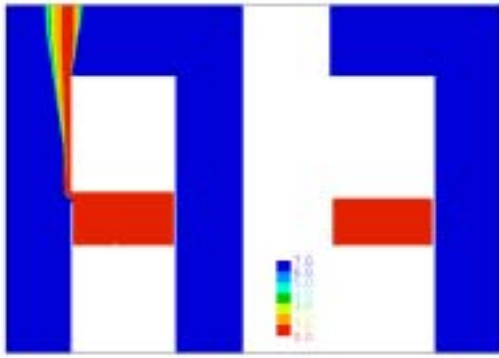


Lobby: L: 0.5m² high-level vent and
0.5m² low-level wall vent
(both vents 1m wide x 0.5m high)
R: No vent
Mean temp in occupied space = 21°C



Stair: Top and bottom vent



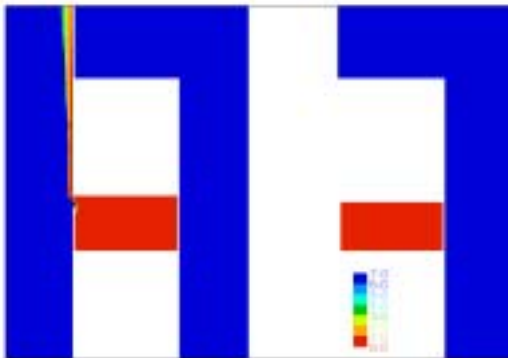


NO SMOKE IN STAIR

Lobby: L: 1.25m high-level wall vent
(2.5m wide x 0.5h high)
R: No vent

Stair: Top and bottom

Mean temp in occupied space = 23°C



Lobby: L: 1.25m high-level wall vent
(2.5m wide x 0.5h high)
(+1 Pa pressure at vent)
R: No vent

Stair: Top and bottom

Mean temp in occupied space = 22°C

