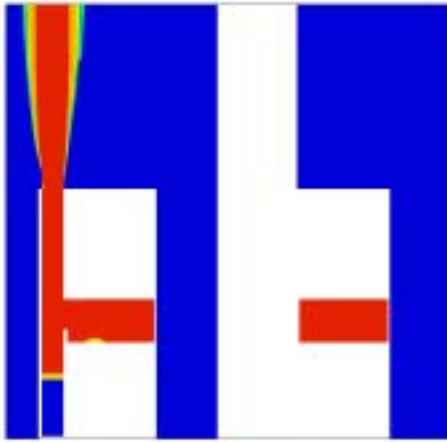


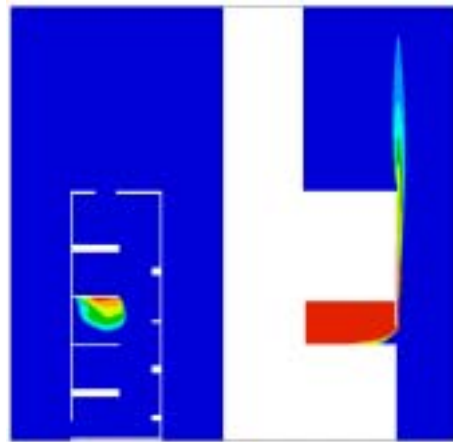


Smoke Ventilation of Common Access
Areas of Flats and Maisonettes (BD2410) -
Final Factual Report – Appendix Eiv
(‘Corridor & Lobby’ scenario ‘visibilities’ with
2.5 MW fire and 0.78 m dwelling, lobby &
stair door openings)

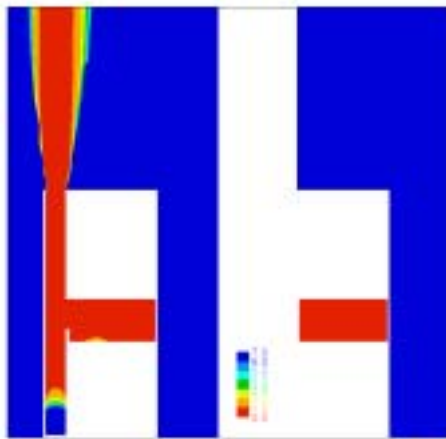
The authors of this report are employed by BRE. The work reported herein was carried out under a Contract placed by the ODPM. Any views expressed are not necessarily those of the ODPM.



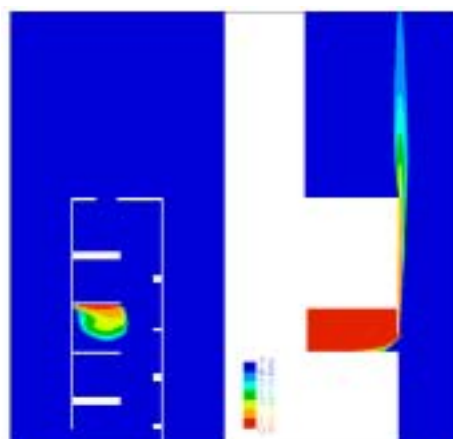
Lobby: L: Natural closed-base, **1.5m²** shaft
 (1.5m² high-level vent to lobby)
 R: No vent
Mean temp in occupied space = 102°C



Stair: Top and bottom vent

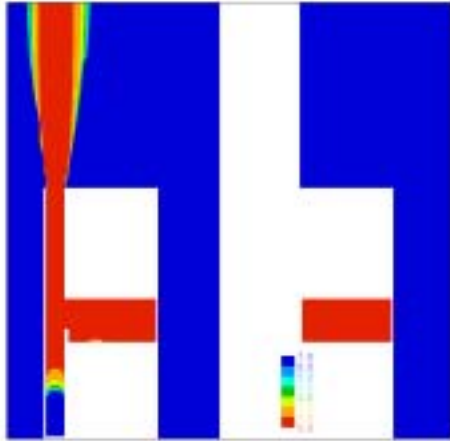


Lobby: L: Natural closed-base, **1.25m²** shaft
 (1.5m² high-level vent to lobby)
 R: No vent
Mean temp in occupied space = 100°C

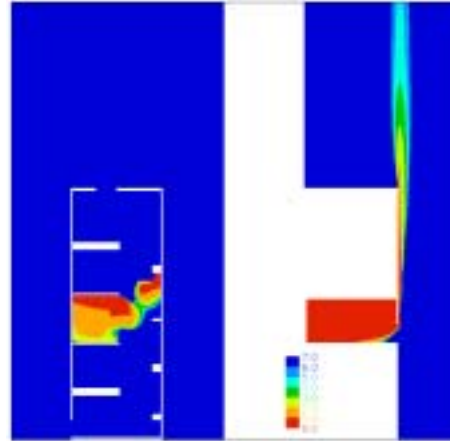


Stair: Top and bottom vent

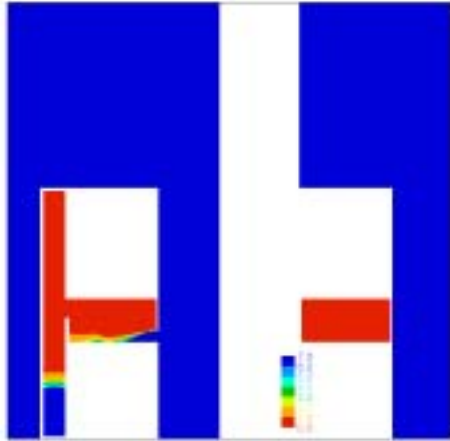




Lobby: L: Natural closed-base, 1m^2 shaft
(1.5m^2 high-level vent to lobby)
R: No vent
Mean temp in occupied space = 101°C



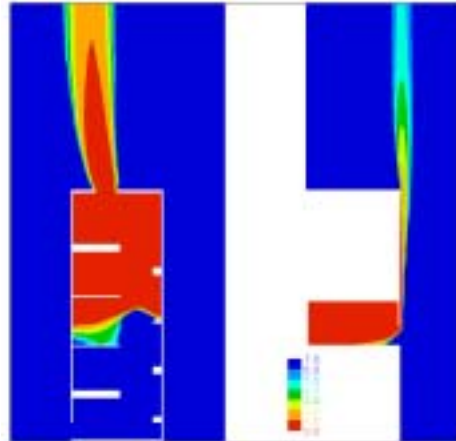
Stair: Top and bottom vent



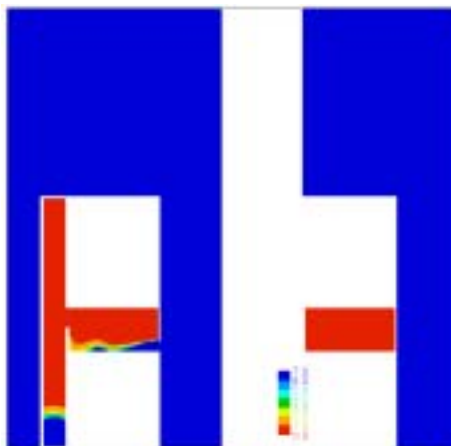
Lobby: L: Mechanical closed-base, **1.5m²** shaft
(**320 ach⁻¹** (2.4 m³s⁻¹) and
1m² high-level vent to lobby)
R: 0.5m² low-level vent

Mean temp in occupied space = 81°C

Closed door ΔP = 25 Pa; open door vel = 1.0ms⁻¹



Stair: Top and bottom vent



Lobby: L: Mechanical closed-base, **1.5m²** shaft
(**640 ach⁻¹** (4.9 m³s⁻¹) and
1m² high-level vent to lobby)
R: 0.5m² low-level vent

Mean temp in occupied space = 81°C

Closed door ΔP = 92 Pa; open door vel = 2.1ms⁻¹

NO SMOKE IN STAIR

Stair: Top and bottom vent

bre