

BREEAM on an International level

Virginia Cinquemani

BREEAM International Manager

Perception of green buildings and design



Reality

201 Bishopsgate & The Broadgate Tower

SHOWCASING: BRE'S INNOVATION PARK



Protecting People, Property and the Planet

What is BREEAM?

- Environmental Assessment Method
- Certification scheme
- Voluntary
- Independent & credible
- Holistic
- Customer focused
- Credits based

The logo for BREEAM, consisting of the word "breeam" in a lowercase, rounded, sans-serif font. The letters are a light yellow-green color.

BREEAM

- The world's **longest established** and **most widely used** environmental assessment method for buildings
 - Created in 1988 and launched in 1990
- Over **201,399** buildings certified, over **830,000** buildings registered
- Network of over **5,000** independent licensed assessors across the world

Objectives

Set criteria and standards **over and above** those required by **legislation**

Allow a transparent **comparison** of buildings

Challenge the market for more **innovative** solutions

Reduce environmental impacts of buildings

Improve **indoor conditions** for users

Provide a credible **environmental label**

Allow organisations to demonstrate their progress towards achieving their **corporate responsibility** objectives on sustainability

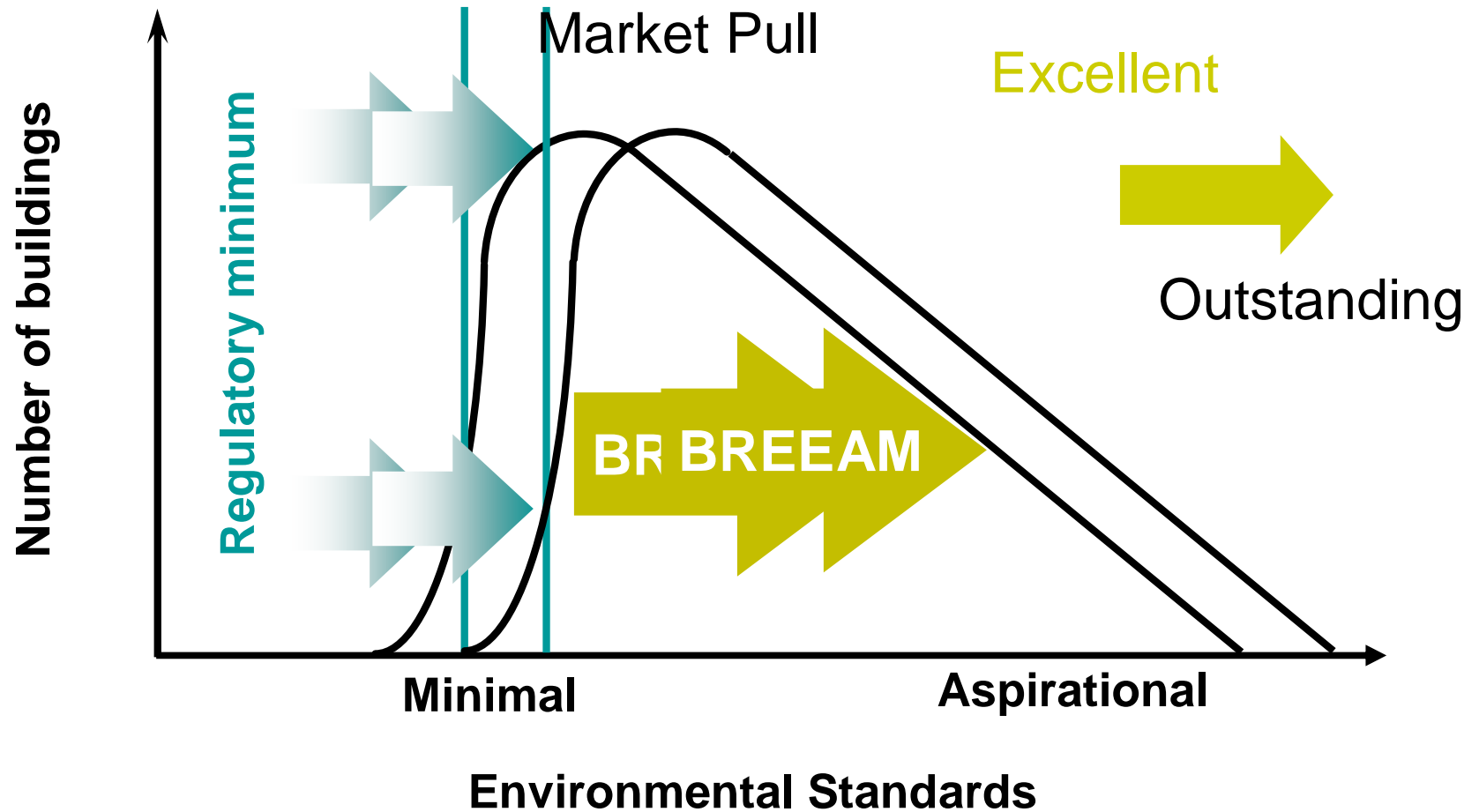
Stimulate the **demand** for sustainable buildings

What are the benefits of using BREEAM?

- Reduced environmental impacts
- Improved functionality, flexibility and durability
- Higher user satisfaction
- Demonstrate improved performance (design & operation)
- Improved letting / sales potential



Setting the standard



BREEAM Categories



Management



Energy



Water



Land Use & Ecology

Health & Wellbeing



Transport



Materials



Waste



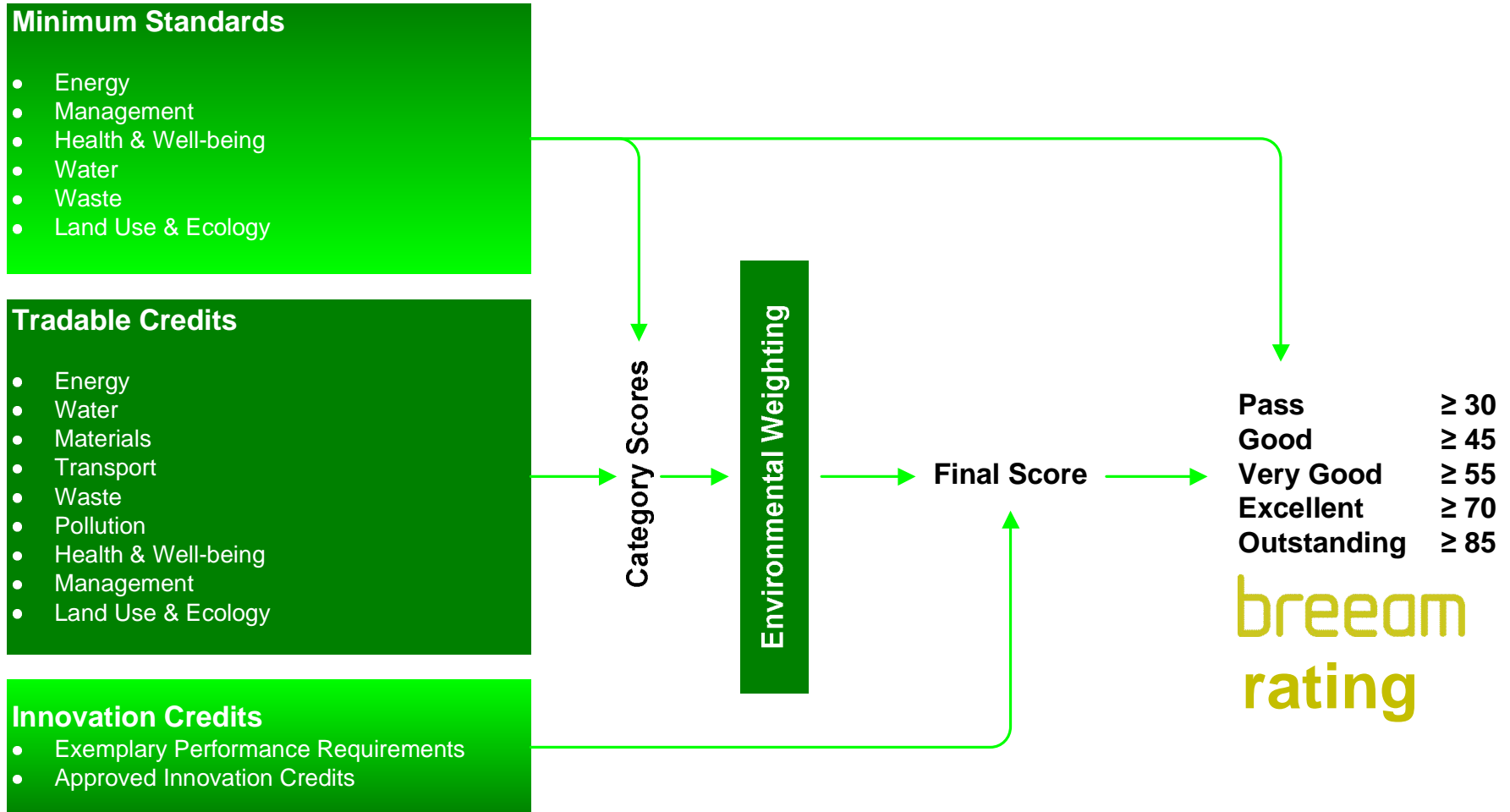
Pollution



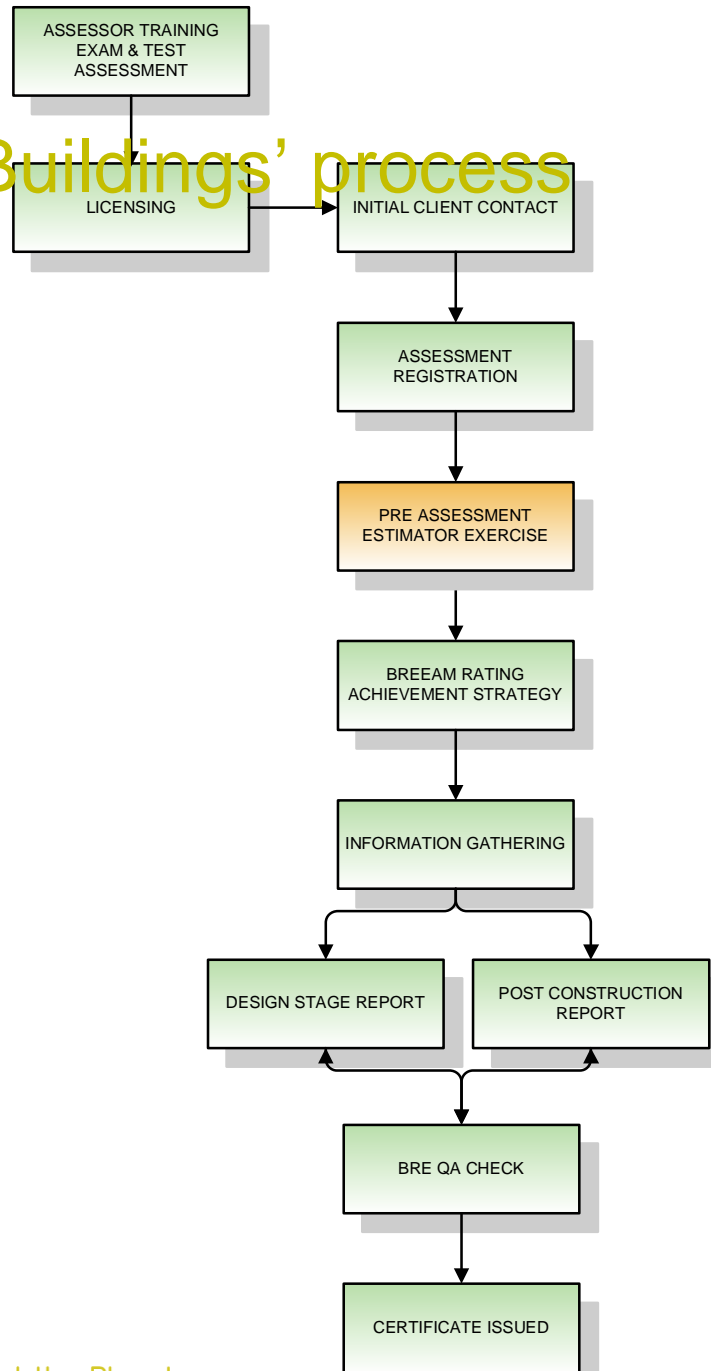
Protecting People, Property and the Planet

breglobal

General BREEAM process



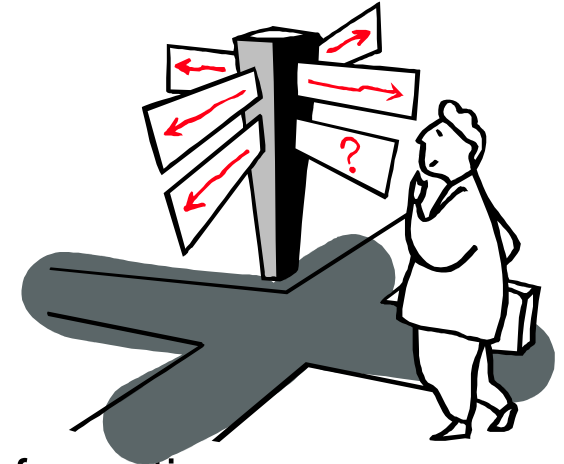
BREEAM 'Buildings' process



What does BREEAM cover?

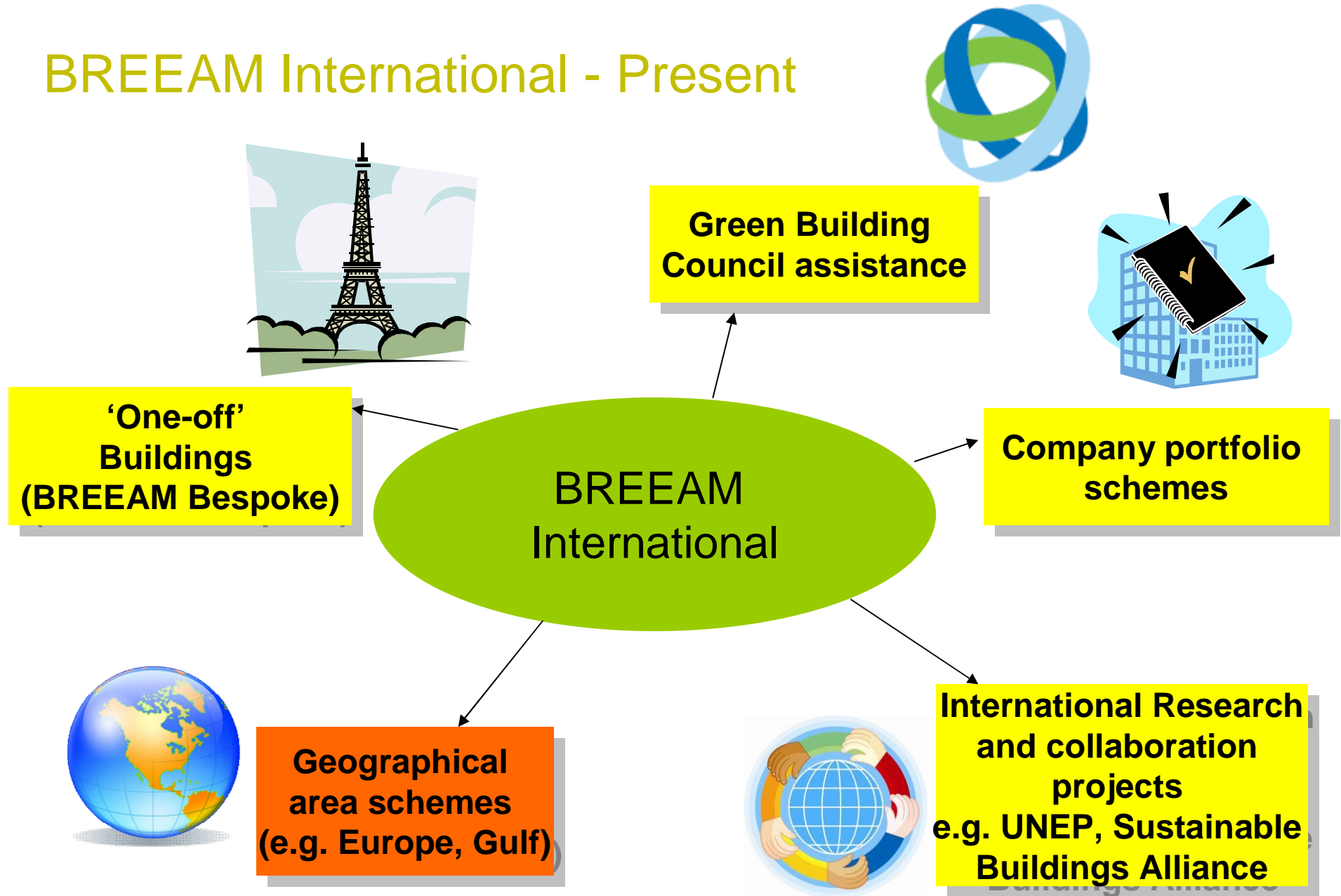
- All building types
 - Standard schemes for common building types
 - Bespoke BREEAM for others
- All stages
 - Design – new build and refurbishments
 - Construction – new build and refurbishments
 - Operation – existing buildings

Life cycle stages



- **Design stage**
 - Based on specifications and pre-development information
 - Options for shell & core or fit-out assessments
- **Post construction review**
 - ‘As built’ review and verification of design stage assessment
- **BREEAM In Use**
 - Environmental management tool for property portfolios
 - Formal certification possible

BREEAM International - Present



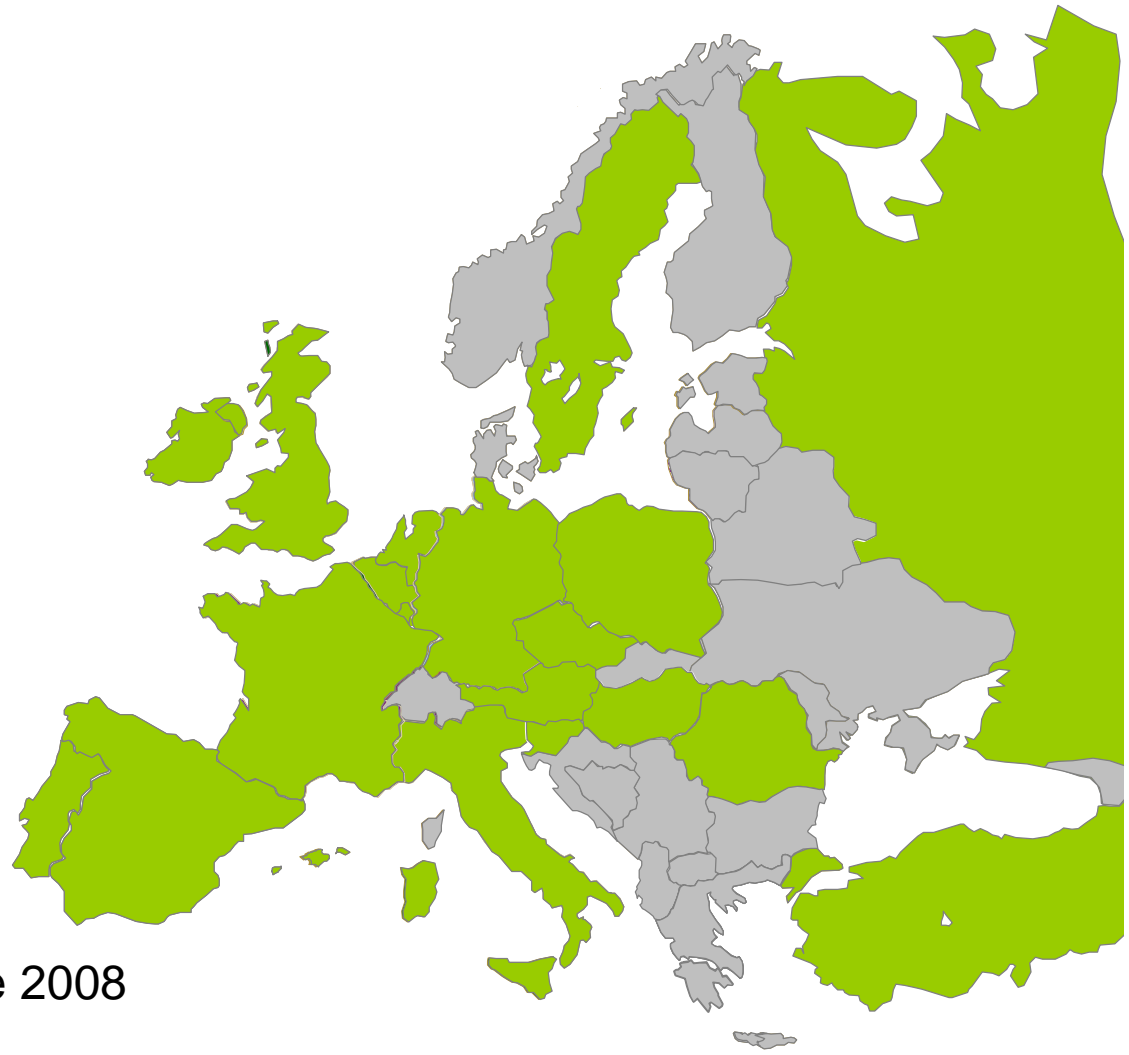
BREEAM International assessors

- 663 trained assessors
- 284 licensed assessors
- 195 licensed organisations
- 24 countries
- www.greenbooklive.com



BREEAM Europe schemes

- Currently being assessed:
 - 35 Retail projects
 - 58 Offices projects
 - 5 Industrial projects
- Already certified:
 - 4 Retail
 - 4 Offices
- Overall 106 assessments since 2008



Examples of certified projects



Centrum Galerie Dresden, Multi,
Germany

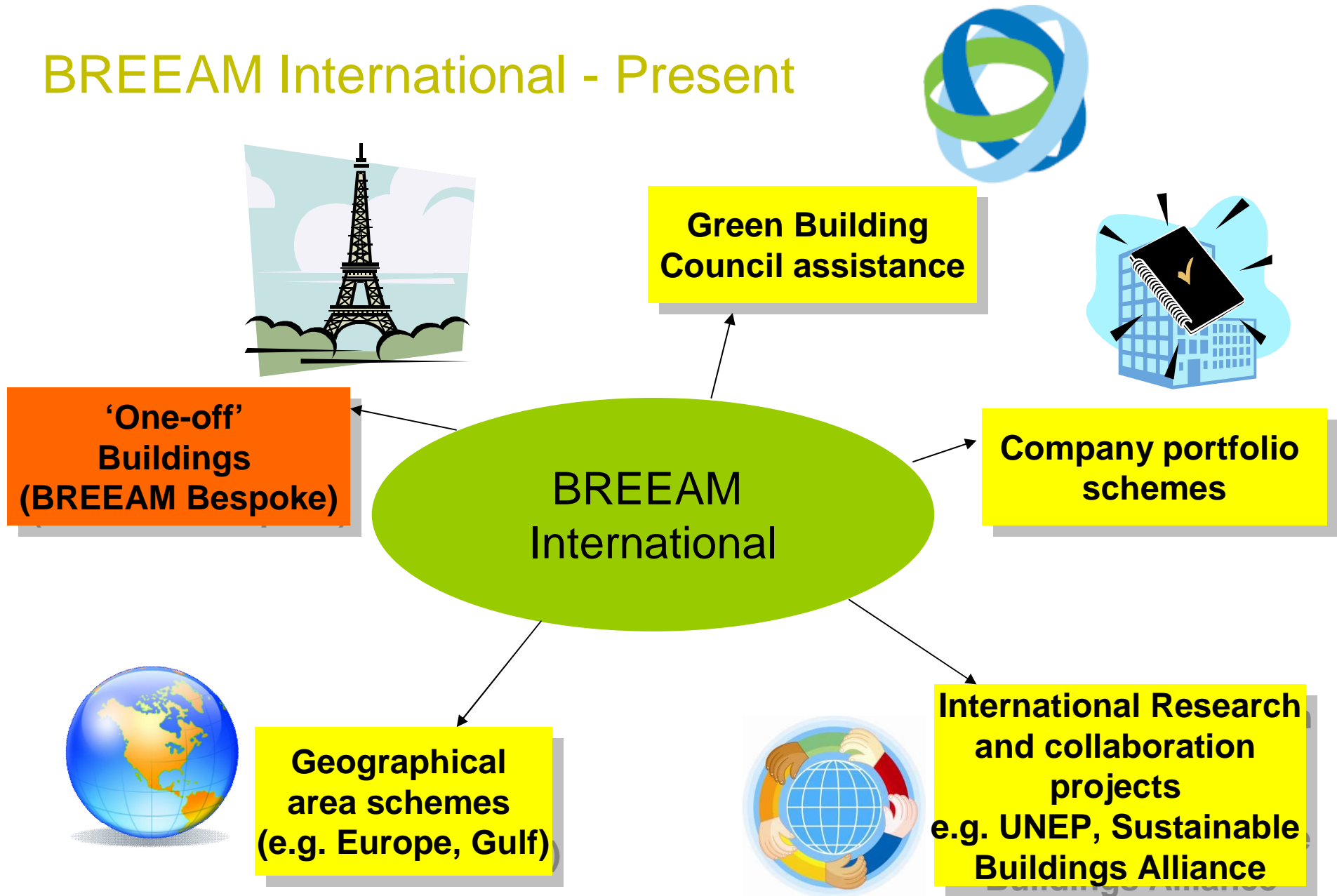
BREEAM Excellent

Erzurum shopping centre, Redevco,
Turkey

BREEAM Very Good

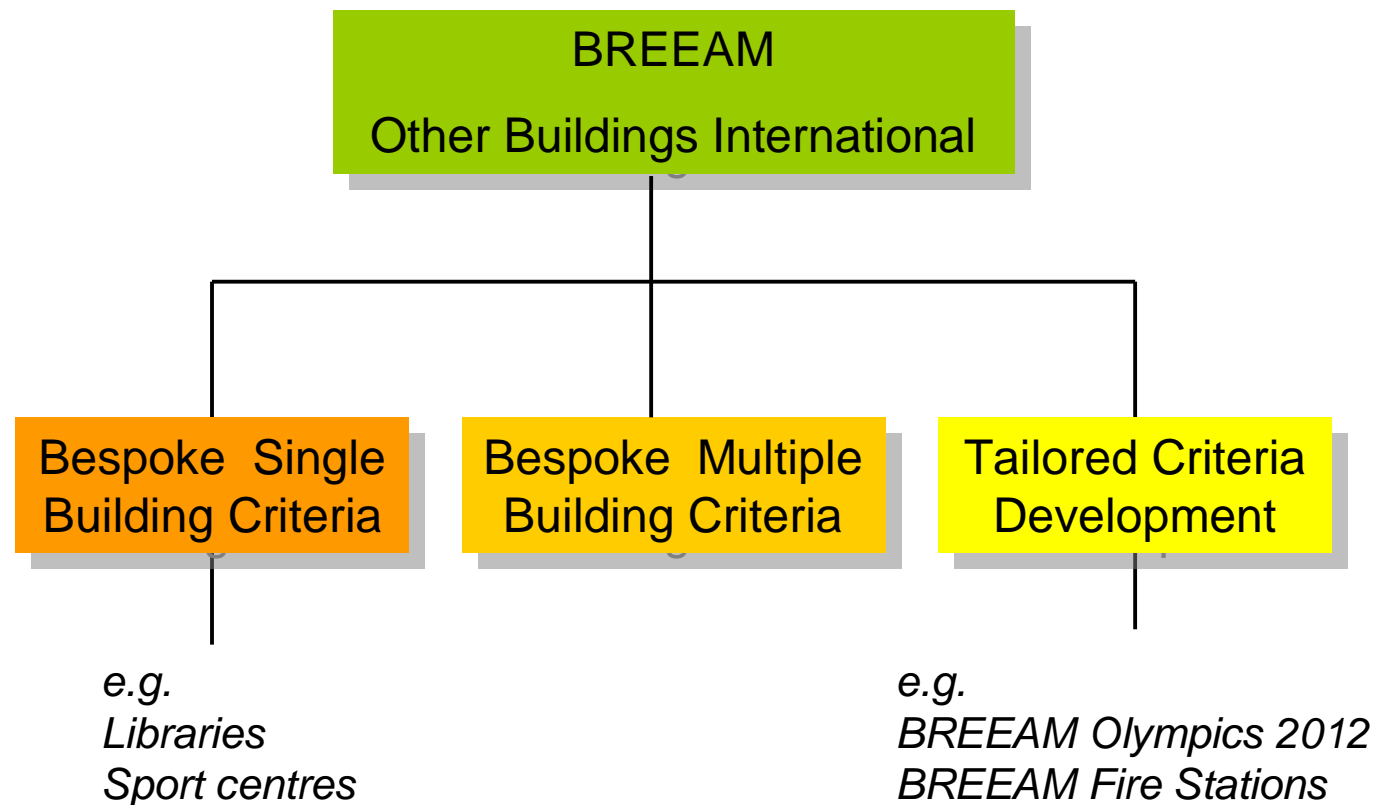


BREEAM International - Present

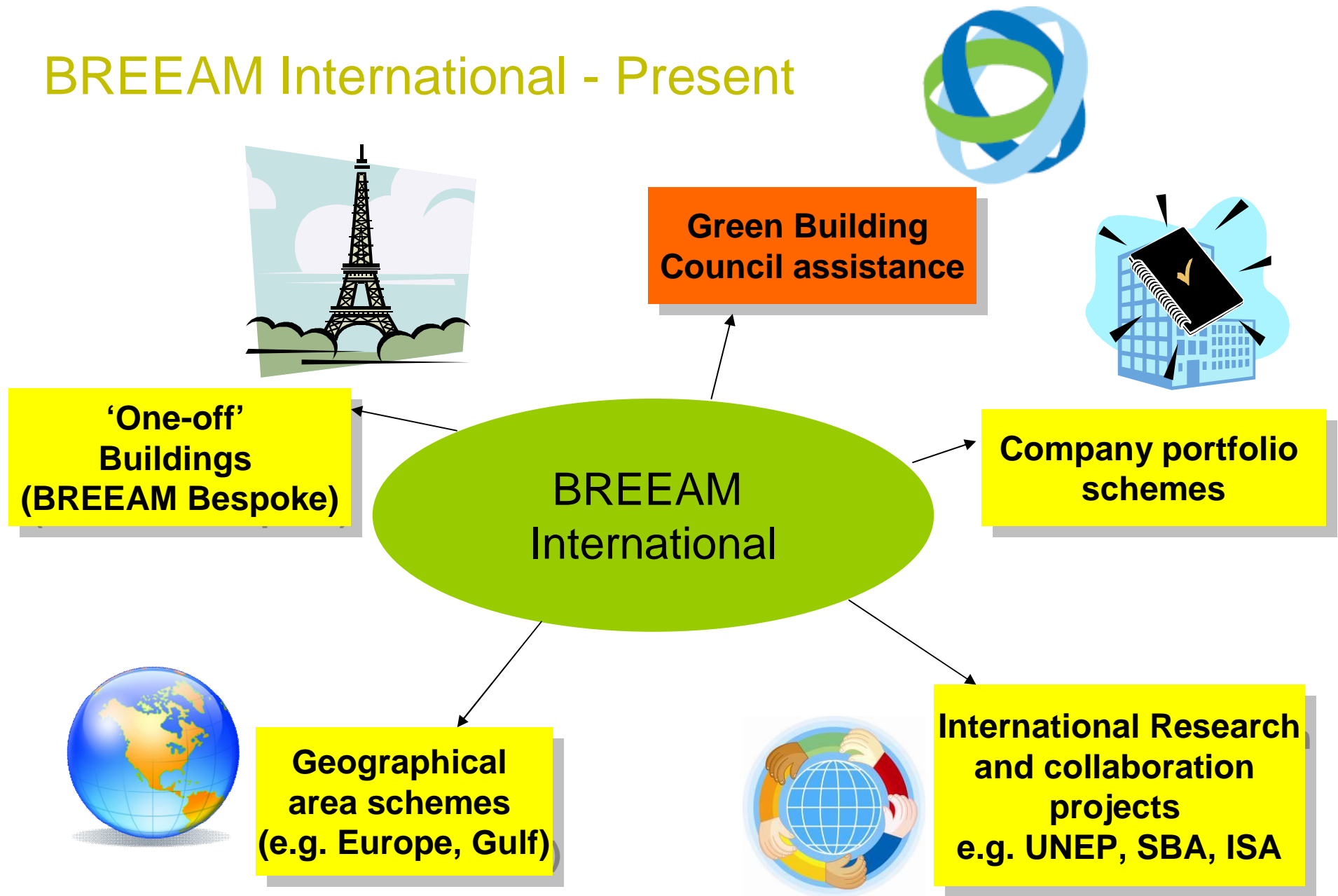


BREEAM Other Buildings (aka Bespoke)

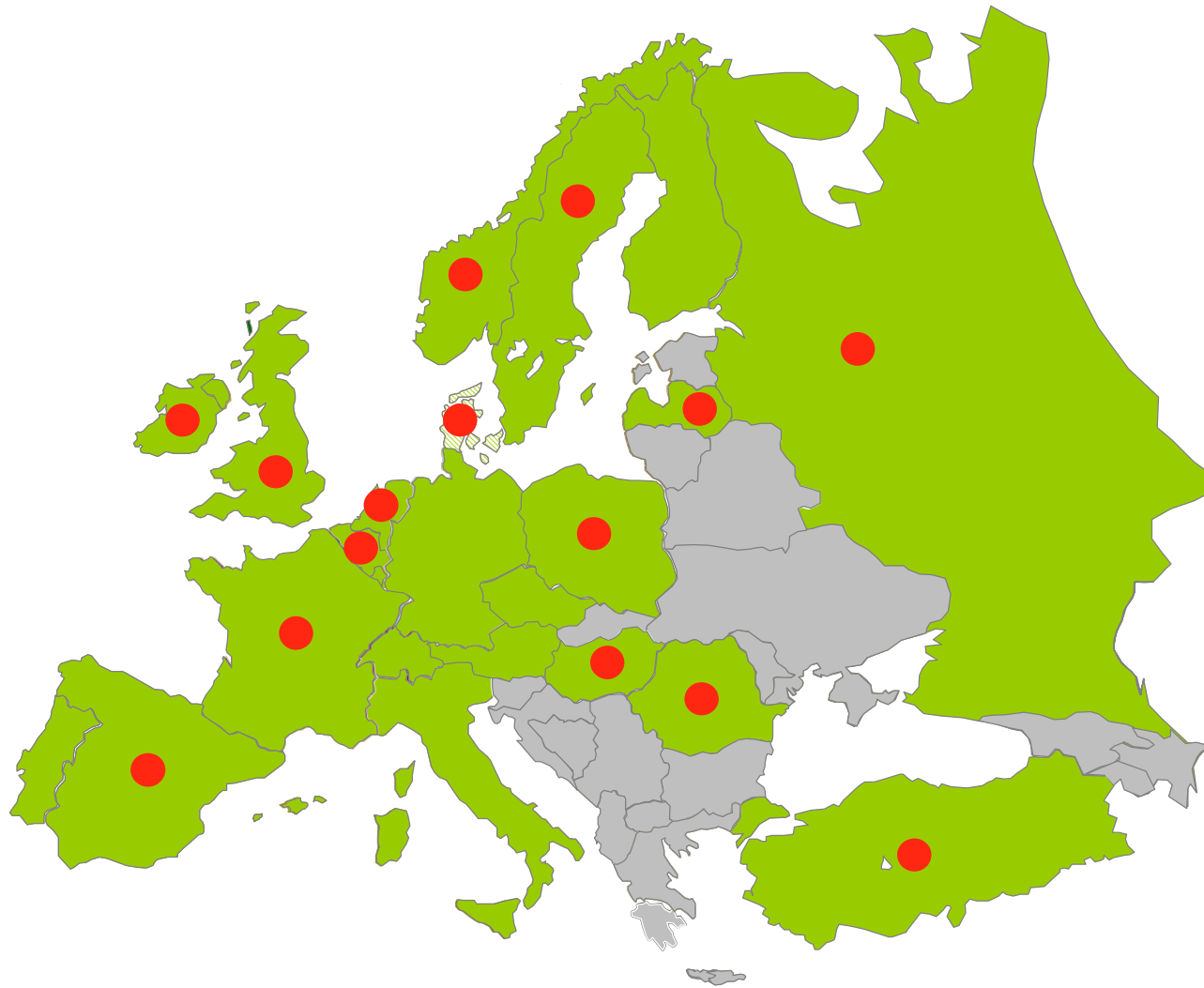
BREEAM Other Buildings covers a family of BREEAM UK and International schemes



BREEAM International - Present



Uptake of BREEAM on a national level



Key factors to be taken into account

- Climate
- Ecology
- Construction materials
- Culture
- Construction practices
- Building Regulations
- Infrastructure
- Historical context
- Political decisions
- Geography...



Examples

- A different climate may impact on:
 - Weightings
 - Cooling strategy & energy consumption
 - Type of renewable technologies
- Different infrastructures may impact on:
 - Capacity to recycle waste
 - Capacity to cycle to and from buildings
- Different construction practices may impact on:
 - Risk of legionellosis contamination



BREEAM National schemes

- Currently BREEAM NL for commercial and education buildings are the only national BREEAM schemes available.

Note

- Countries currently working on adapting BREEAM are: Spain, France, Turkey, Latvia
- BREEAM International assessors are kept informed of BREEAM developments internationally
- Documentation will be available in English on the BREEAM Extranet

The logo for BREEAM NL, featuring the word "breeam" in a bold, lowercase, sans-serif font in a yellow-green color, followed by "nl" in a smaller, lowercase, sans-serif font in a grey color.

Contact details

- BREEAM International office
- +44 (0)1923 66 4462
- breeaminternational@bre.co.uk
- www.breeam.org
 - *BREEAM fact file*
 - *Comparison of International environmental assessment methods*