

Embedding a circular economy in the building sector



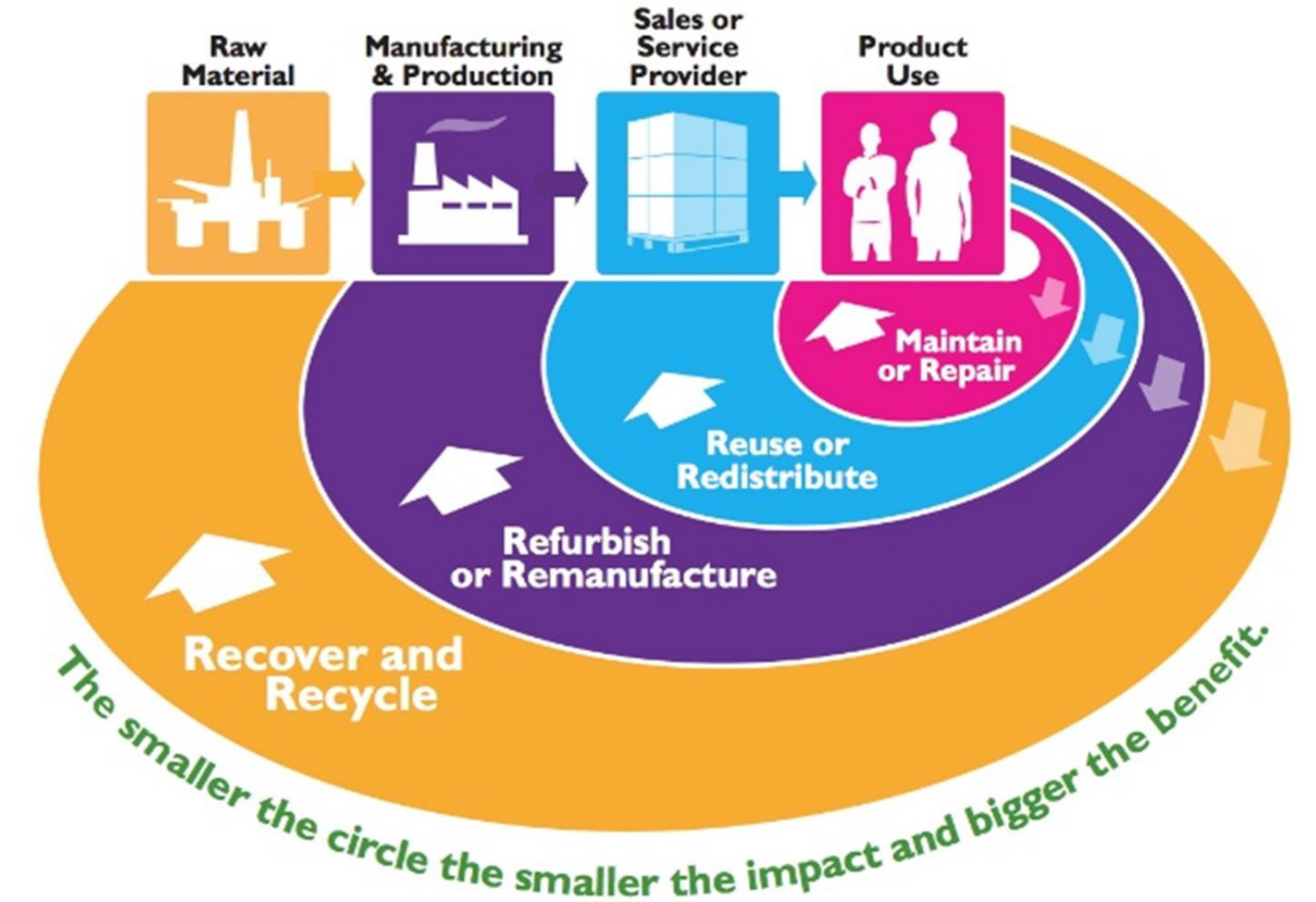
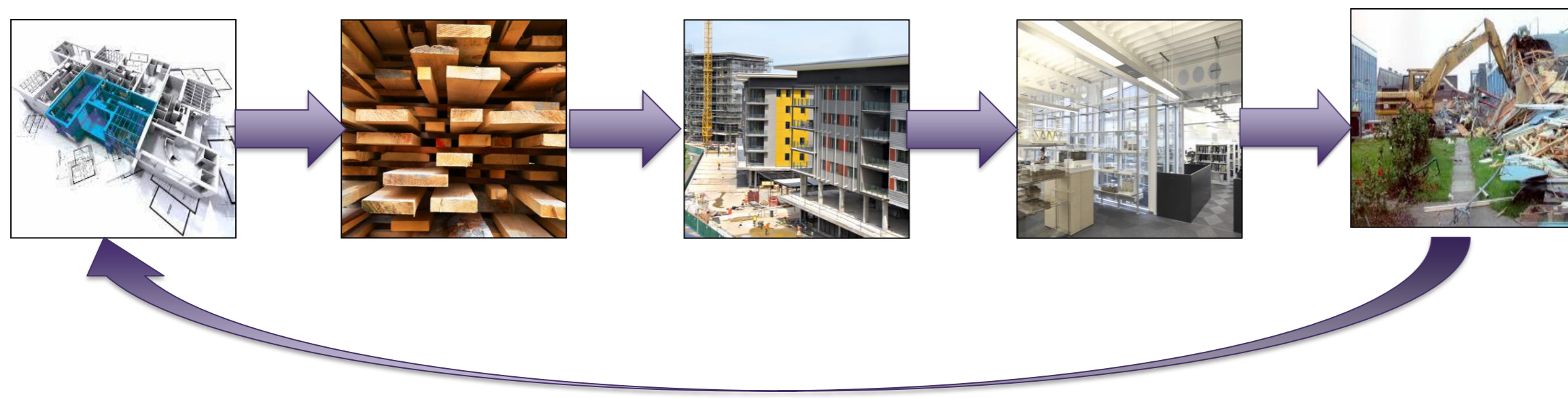
Katherine Adams

Background

- Buildings use around 40% of global material resources and generate a large amount of waste, much of which is down-cycled (UNEP, 2015; Eurostat, 2015)
- The aim of a circular economy is to ensure that material resources retain their inherent value for as long as possible, moving away from the largely current linear model of consumption, 'take, make and dispose'.
- The term 'circular economy' is increasingly common, however its application within the building sector is in its infancy.
- A better understanding of how a circular economy can be implemented throughout a building's lifecycle and the associated benefits will encourage greater adoption.

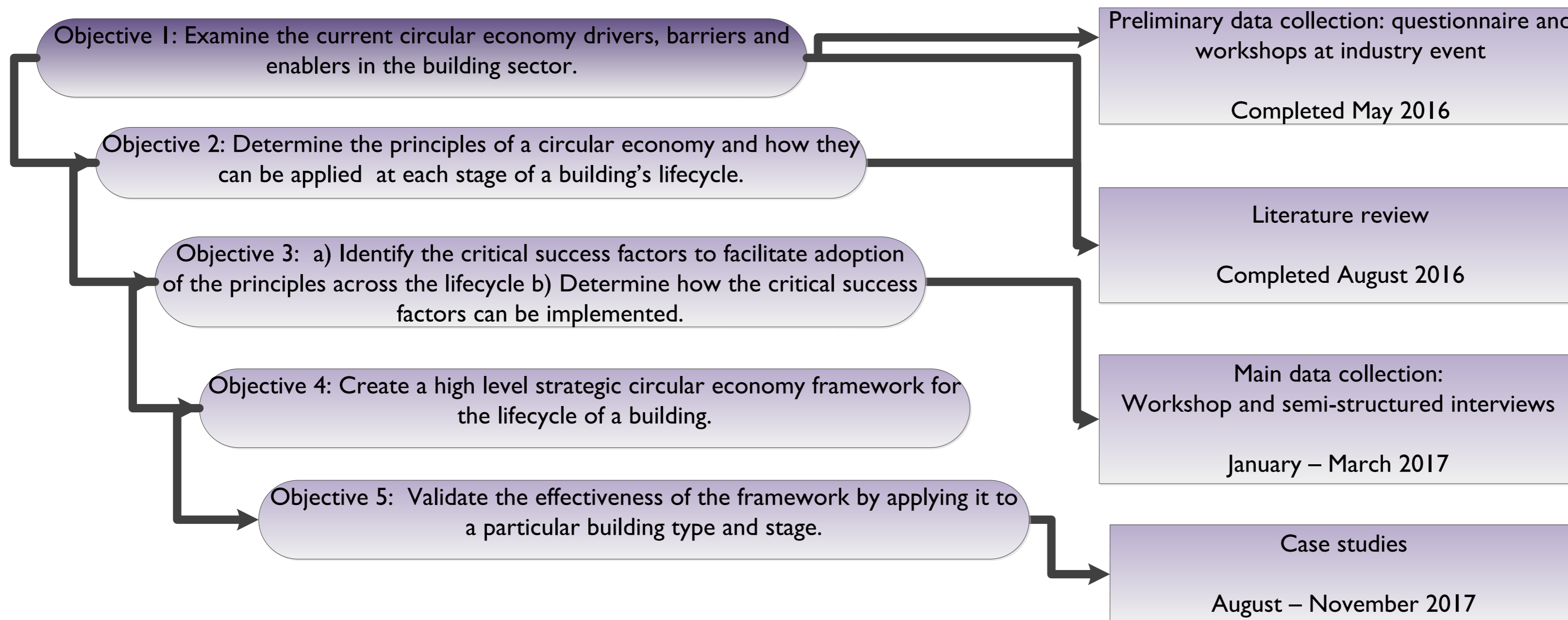
Research Aim

To develop a framework for embedding circular economy throughout a building's lifecycle.

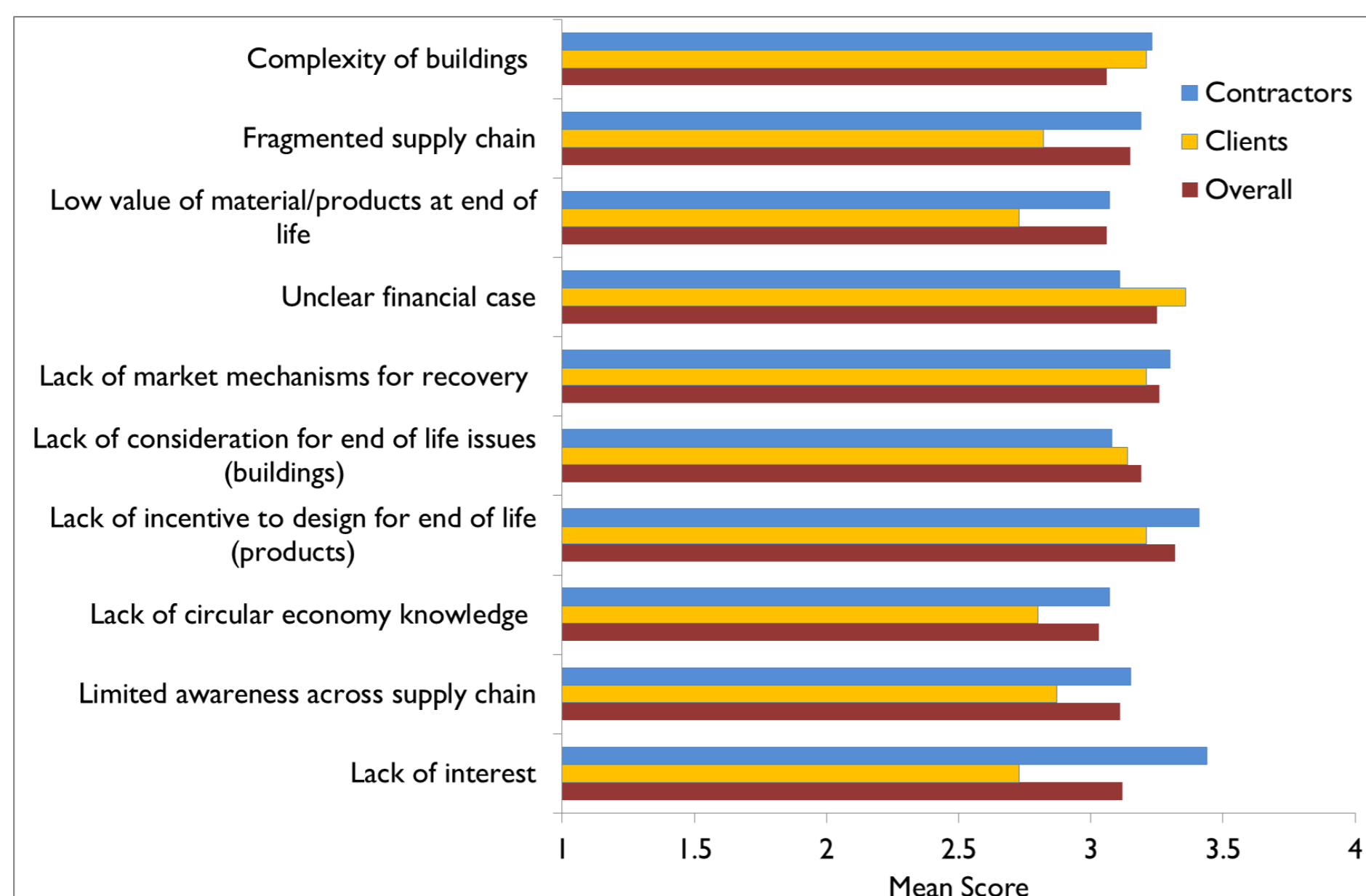


Research Objectives and Methodology

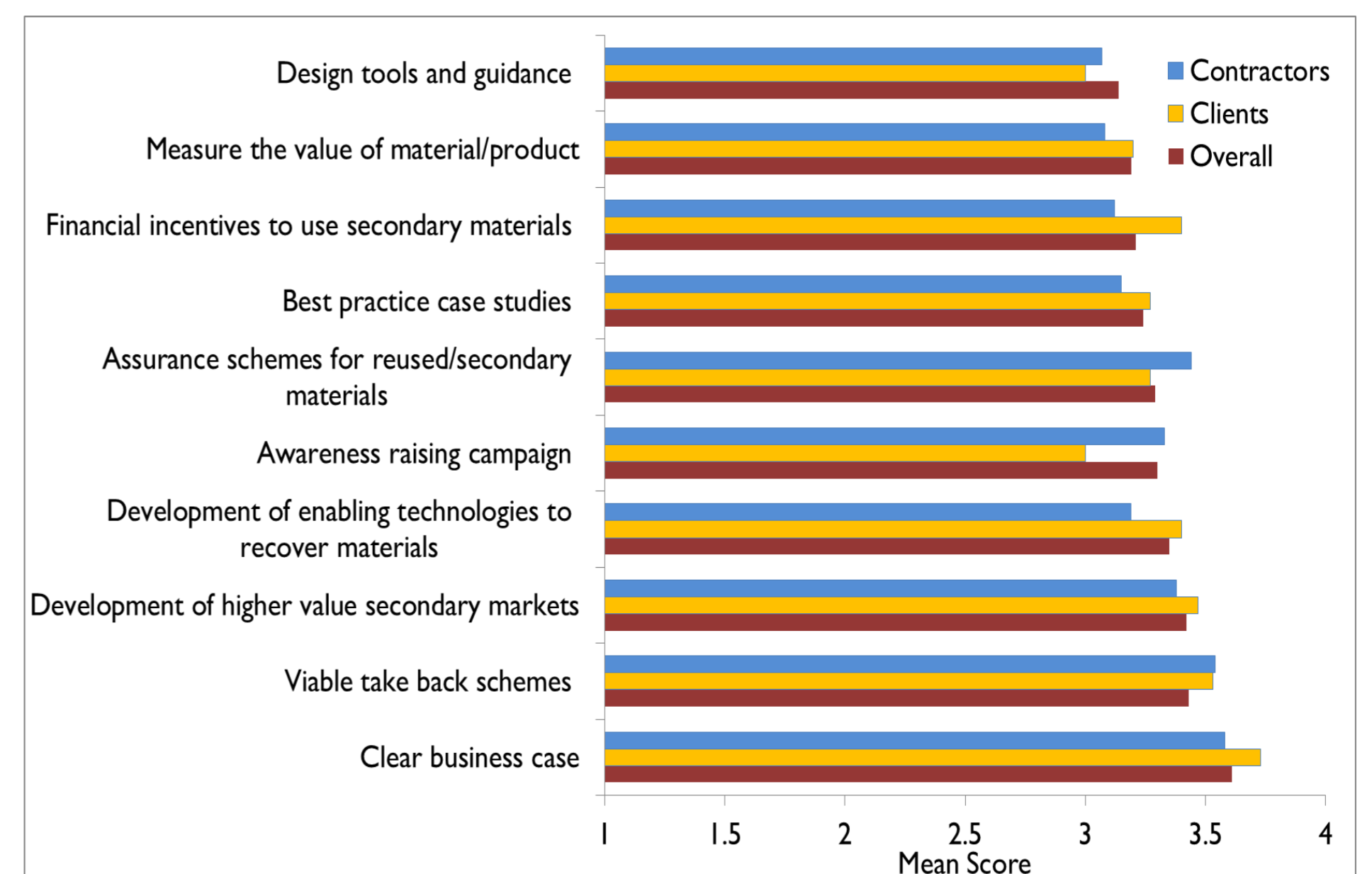
UKCG, 2014



Initial findings



The most significant challenges for implementing circular economy industrywide (1 = insignificant; 4 = major challenge)



The most significant enablers for implementing circular economy industrywide (1 = insignificant; 4 = major enabler)

REFERENCES

Eurostat, 2015. Waste statistics - Statistics Explained. Available at: http://ec.europa.eu/eurostat/statistics-explained/index.php/Waste_statistics [Accessed August 16, 2016].
UKCG (UK Contractors Group) (2014) Circular Economy, UK Contractors Group. Online: [http://www.wrap.org.uk/sites/files/wrap/UKCG%20Circular%](http://www.wrap.org.uk/sites/files/wrap/UKCG%20Circular%20Economy%20survey%20results.pdf)

20Economy%20survey%20results.pdf [Accessed 01.11.2016]
UNEP (United Nations Environment Programme), 2015. Sustainable Buildings and Climate Initiative - Why Buildings. Available at: <http://www.unep.org/sbc/AboutSBCI/Background.asp> [Accessed November 26, 2015].

ACKNOWLEDGEMENTS



CONTACT INFORMATION

School of Civil and Building Engineering
Loughborough University
Leicestershire LE11 3TU UK
E. k.adams@lboro.ac.uk
www.lboro.ac.uk/civil-building