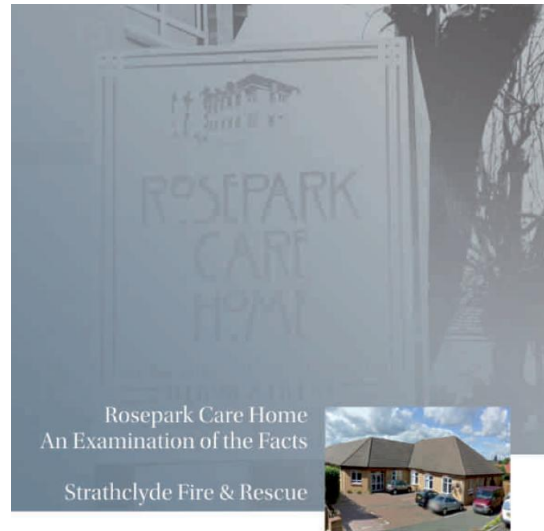


Rosepark Care Home



Tuesday 6 December 2011

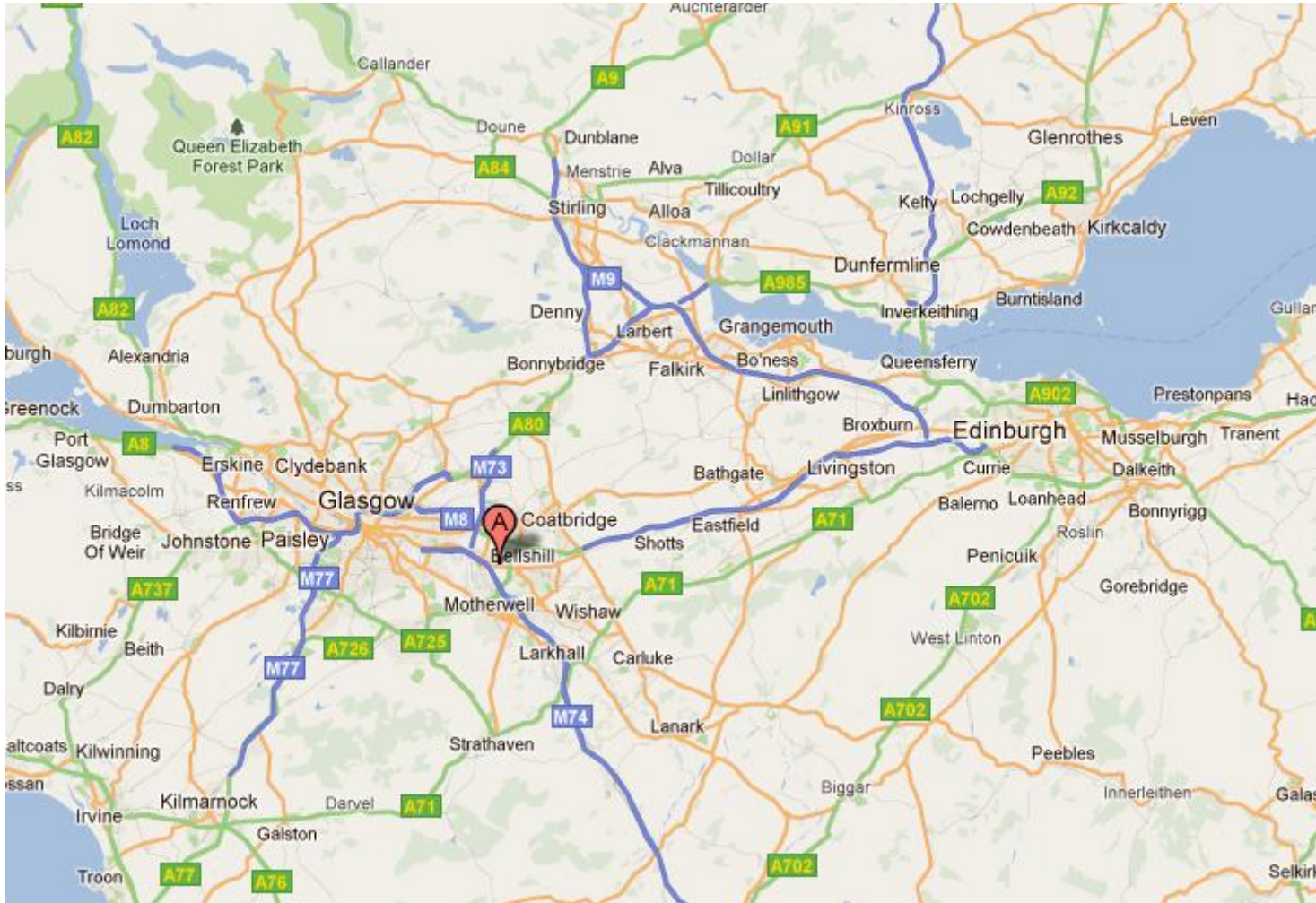
Alan Smith

Group Commander

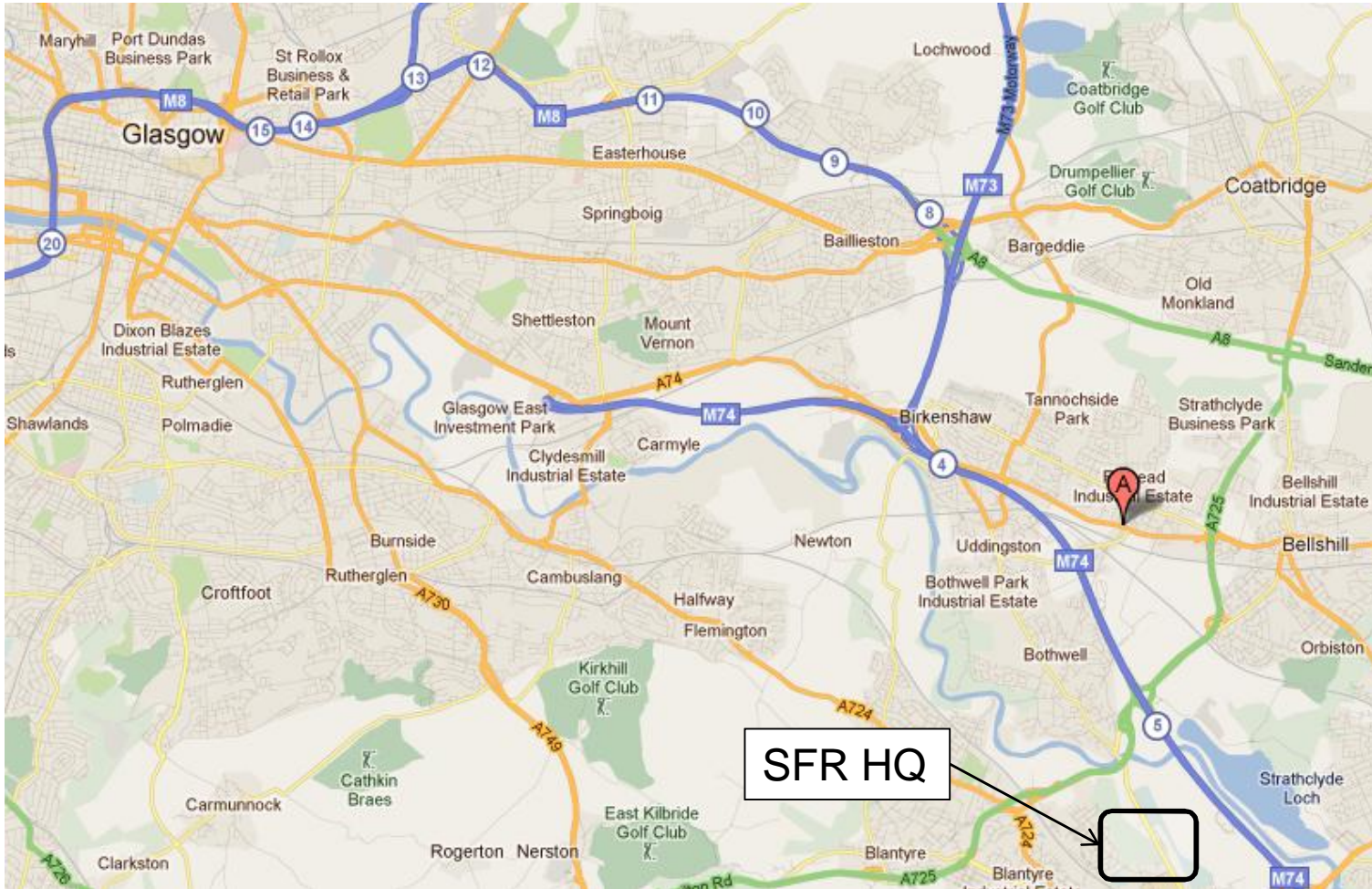
Incident Summary



Rosepark Care Home



Rosepark Care Home



Rosepark Care Home



Rosepark Care Home



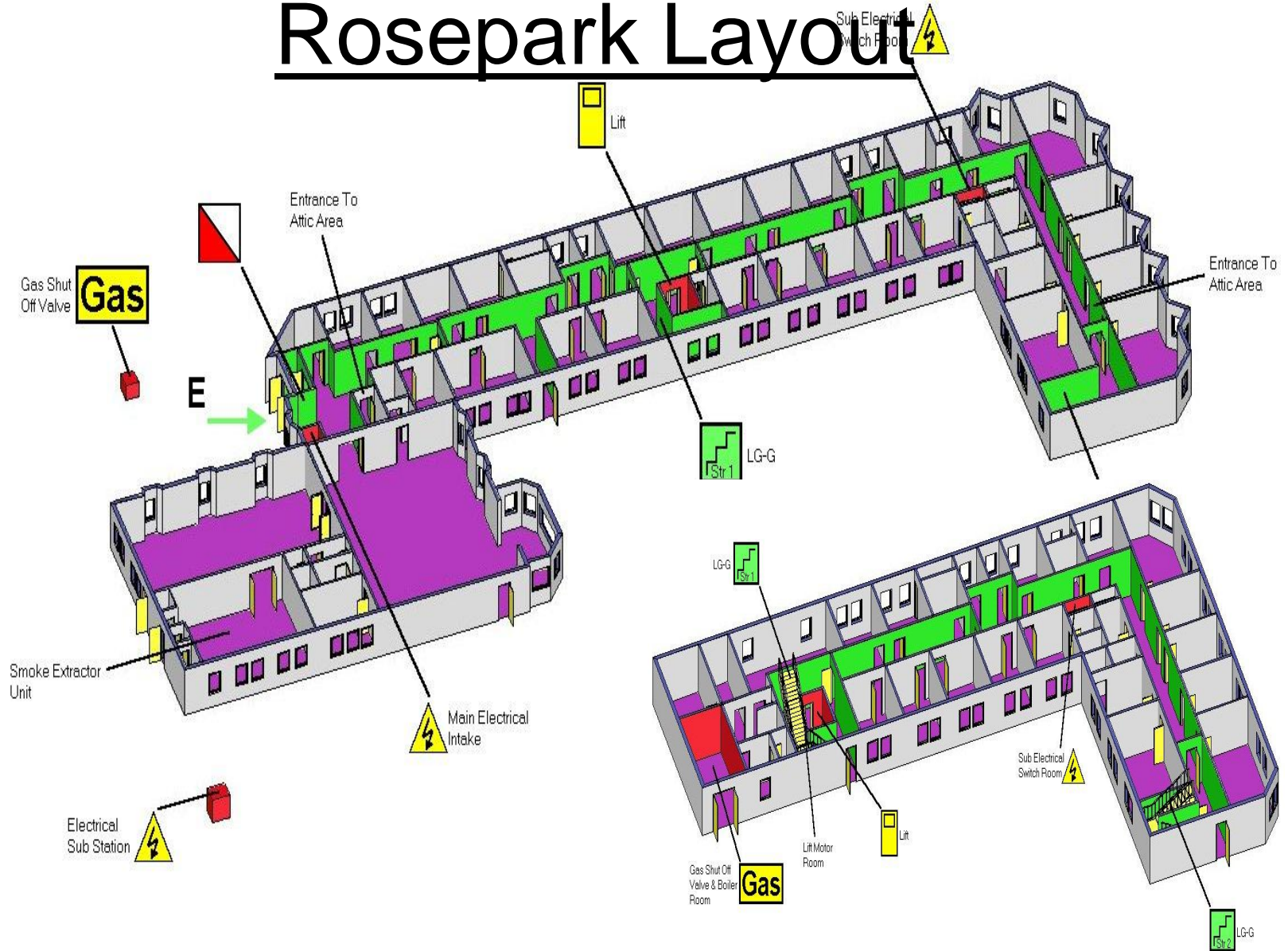
Rosepark Postal Address



Rosepark Access Point



Rosepark Layout



Rosepark Layout

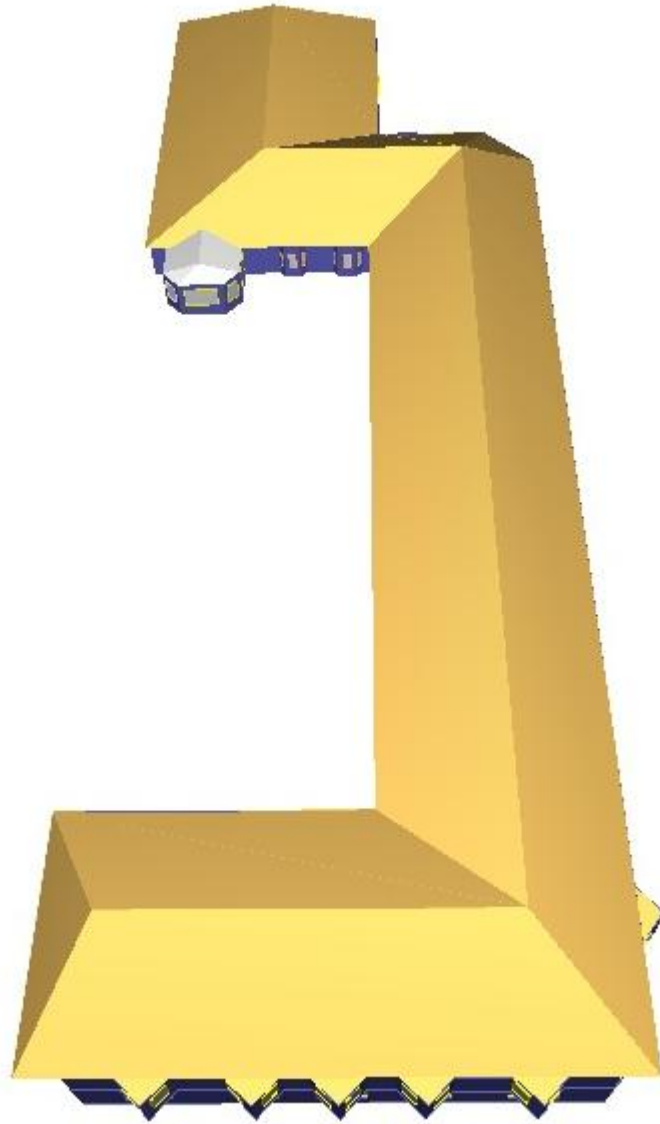


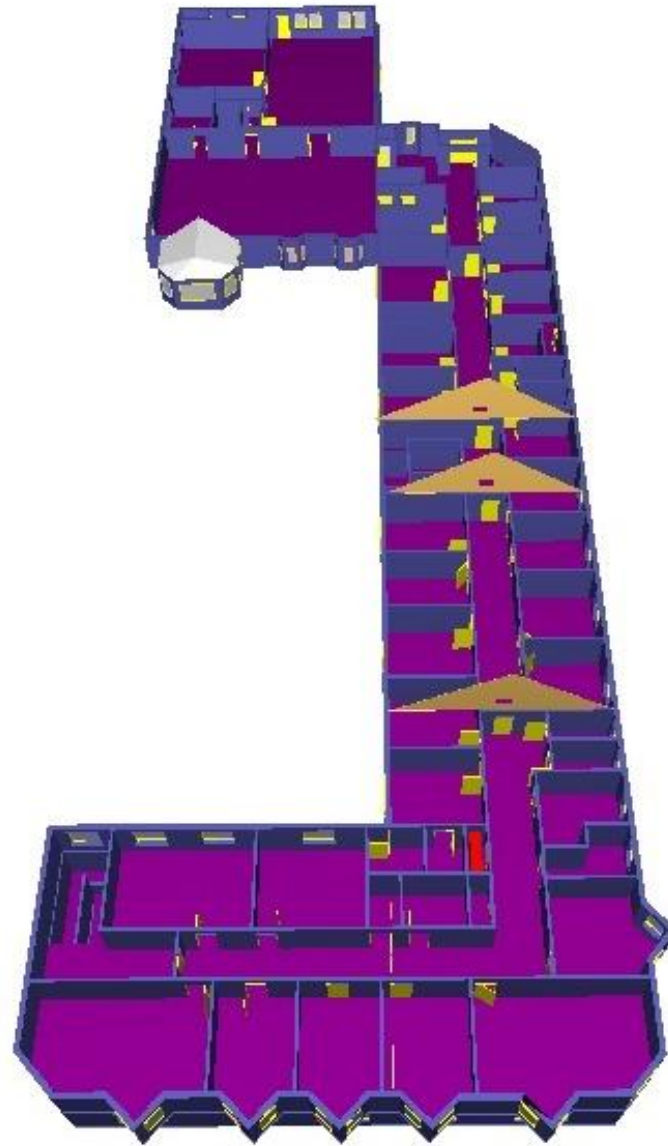
Rosepark Incident Summary

Timeline of Fire.

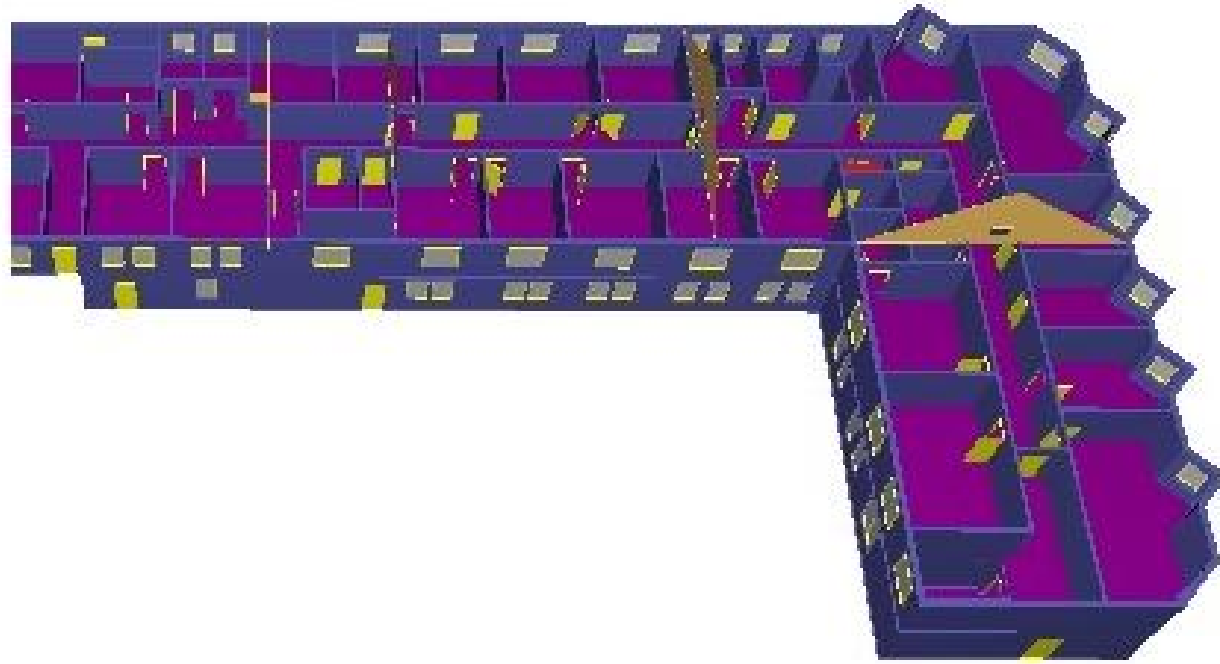
- Ignition around 04:25
- Alarm sounded 04:28
- First call to F.S. 04:37
- First attendance 04:42











Rosepark Incident Summary

- Staff inform OIC fire in lift shaft area lower ground floor.
- And 2 members of staff were evacuating the lower ground floor.
- OIC had observed wisps of smoke from room adjacent to lift shaft as he approached the building. Smoke also in lift shaft at the upper level.
- Residents on the upper floor had not been evacuated



Rosepark Incident Summary

- Persons reported message sent at 04:50.
- Assistance message make pumps 3 sent at 04:55.
- BA team assisted staff with the evacuation of 14 residents on lower ground floor. No fire conditions were encountered



Rosepark Incident Summary

- 2nd BA team committed to corridor on ground floor beyond the central stairway at 04:53 Six casualties were found and removed from ground floor by 05:06
- Assistance message make pumps 4 sent at 05:04.
- BA team on lower ground floor encountered heavy smoke logging in stairway 2 at approximately 05:04.



Rosepark Incident Summary

- Additional BA teams committed when further resources arrived. (In total 5 teams 11 personnel). these additional teams found further casualties on the ground floor.
- Final assistance message make pumps 6 sent at 05:25 possible fatalities. Send on audio visual and fire investigation.



Rosepark Incident Summary

- Fire extinguished at approximately 05:25 therefore crews from the additional 2 fire appliances took no active part in fire fighting operations.
- Fire crews rescued 24 casualties of which 20 survived the incident.
- 14 casualties located on the ground floor 10 confirmed as fatalities at the scene 4 later died in hospital



Rosepark Incident Summary

- Sheriff Principal opined (following toxicology reports and expert witness statements) the 10 residents pronounced dead at incident would have succumbed to the toxic fire products by 04:39 hours and before the attendance of the 1st fire appliance.



Rosepark Layout



Building Design and Fire Precautions

- Compartments
- Sub compartments
- 2 Protected escape stairs 1 hour fire resistance
- Lift enclosure 1 hour fire resistance
- Self closing fire doors to stairways.
- At compartment and sub compartment line and in escape corridors (electro magnetic hold-door devices).



Building Design and Fire Precautions

- Cavity barriers in roof void. (breached)
- Fire dampers in ventilation ducting (shown on warranted drawings but never installed)
- Self closers on all bedroom doors (disabled and wedged open)
- L1 automatic fire alarm and detection system (Defective zoning and panel)
- Emergency lighting.
- Fire extinguishers.
- Signs and Notices.



Thank You

