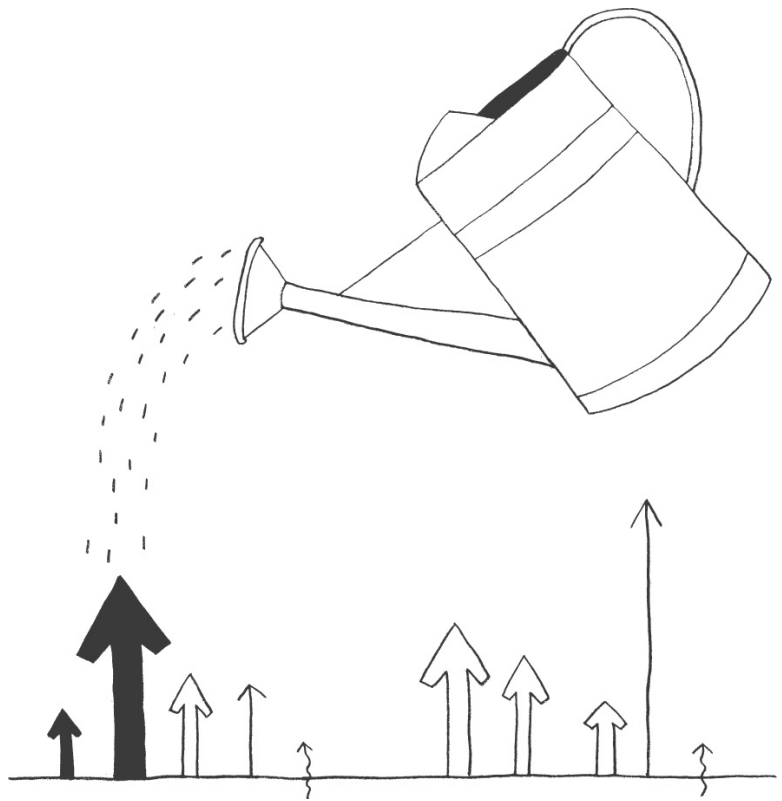


Solutions for Business

Funded by
government

Low Carbon Innovation Fund (LCIF)



What is the Low Carbon Innovation Fund?

- A Low Carbon Venture Capital fund for Small to Medium Enterprises (SME's) in the East of England region.
- The LCIF uses £8M from the European Regional Development Fund matched with approx £12M or more from private co-investment.
- The LCIF is a Finance for Business product, part of the Government's package of publicly funded business support through the Solutions for Business portfolio, designed to help companies start and grow.

What will it do?

- It supports companies developing low carbon products or services or improving their processes to reduce their operational CO2 outputs.
- The fund makes equity investments only - either straight equity deals or convertible loan arrangements.
- Each investment uses public and private investment funds on a 40:60% ratio approximately.
- The LCIF contribution will be between £50k and £500k and the co-investment will be at least the same amount or (significantly) higher.
- Companies must be wholly or partially based in the East of England or moving to the region.
- There may be more than one co-investor

Who are the Co-Investors?

The Fund Manager, Turquoise International, sources the co-investment from:

- Business Angels
- High net worth individuals
- Other suitable funds

How to apply

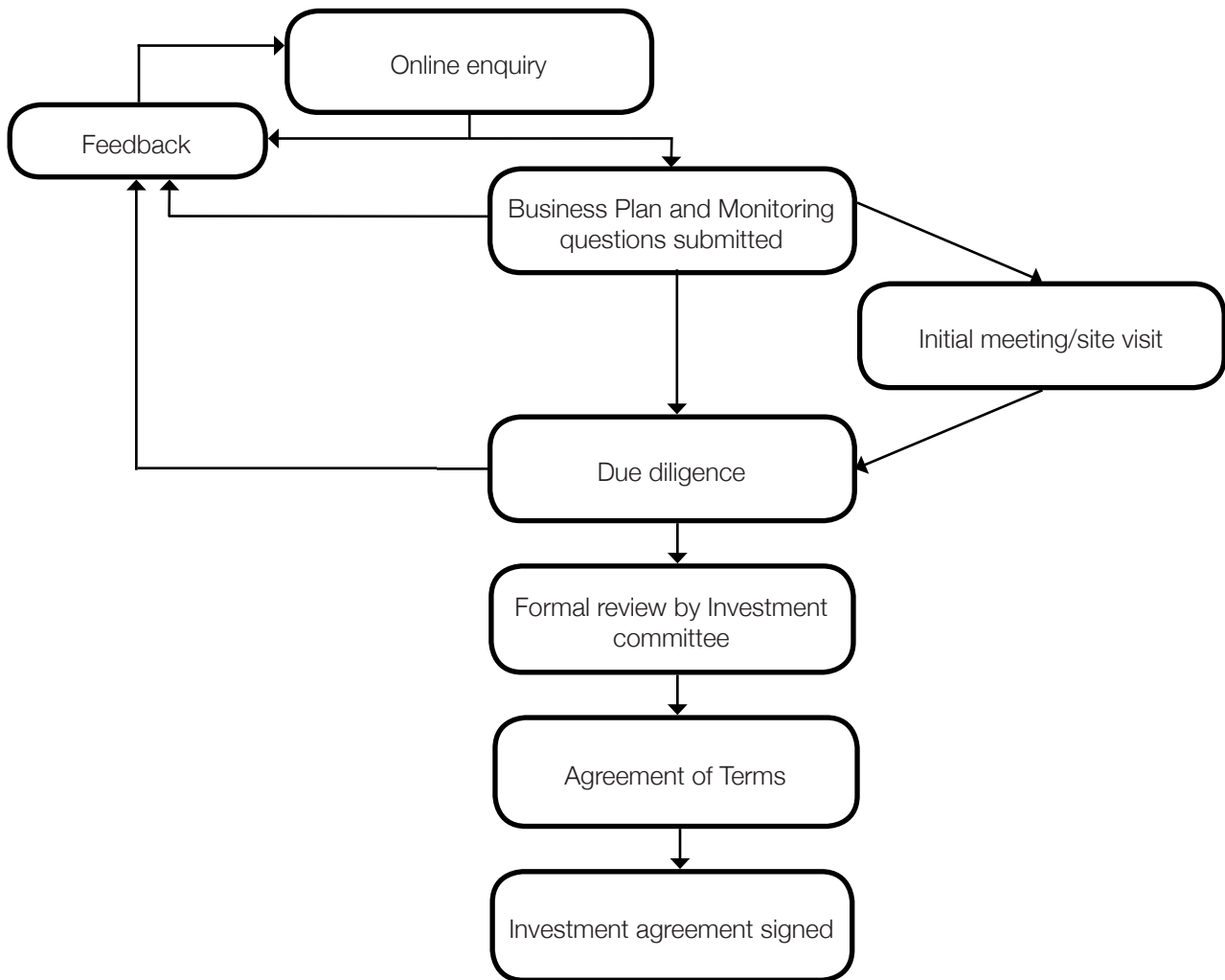
- Guidance notes are available at www.lowcarbonfund.co.uk
- Stage one applications will be submitted via the website as outline enquiries.
- Business Link can advise businesses on the suitability of the fund and other regional finance products and offers advice and support to businesses. Contact via www.businesslink.gov.uk/east or call 08457 171615
- St John's Innovation Centre runs Understanding Finance for Business (UFFB) in the eastern region. The programme provides free advice, workshops and mentoring for SMEs looking to raise at least £10k of finance, whether through banks, grant providers or business angels. For further information go to: www.eeda.org.uk/understandingfinance or call 01223 421081.

The European definition of an SME can be found at http://ec.europa.eu/enterprise/policies/sme/facts-figures-analysis/sme-definition/index_en.htm

Please visit www.lowcarbonfund.co.uk

Application Process

Outline applications are submitted via the website and reviewed. The process then proceeds as per this simplified model:



The fund is operated by the Low Carbon Innovation Centre, UEA in partnership with the fund managers, Turquoise International Ltd.



LCIC was established by the university as a gateway to access the expertise and knowledge developed in UEA's research base that will underpin the progression of the UK economy towards a low-carbon sustainable future.
www.lcic.com

Turquoise is a London based financial advisory company focusing on the energy and environment sector and has made several early stage investments in companies in the low-carbon field. If you have an investment opportunity to bring to the fund please contact the fund manager Turquoise International Ltd.
www.turquoiseassociates.com

